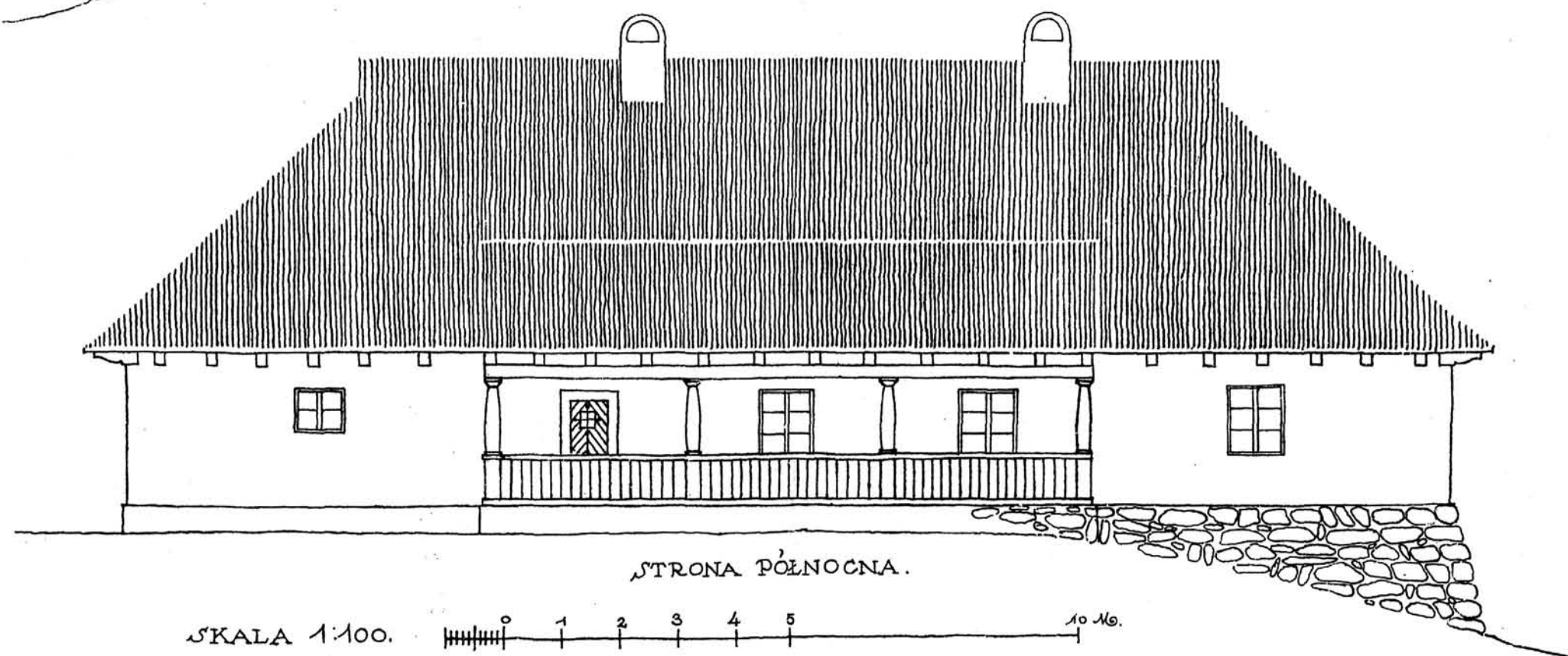
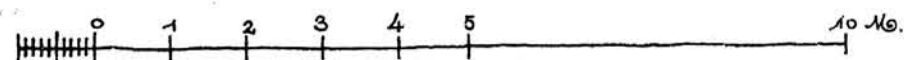


STRONA POŁUDNIOWA.



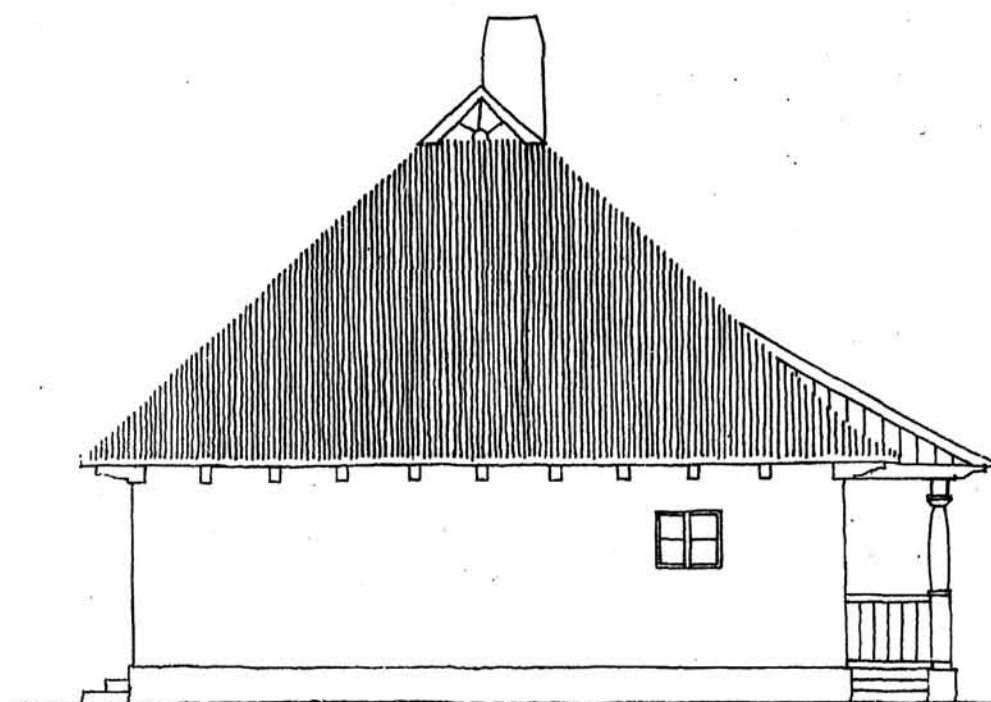
STRONA PÓŁNOCNA.

SKALA 1:100.

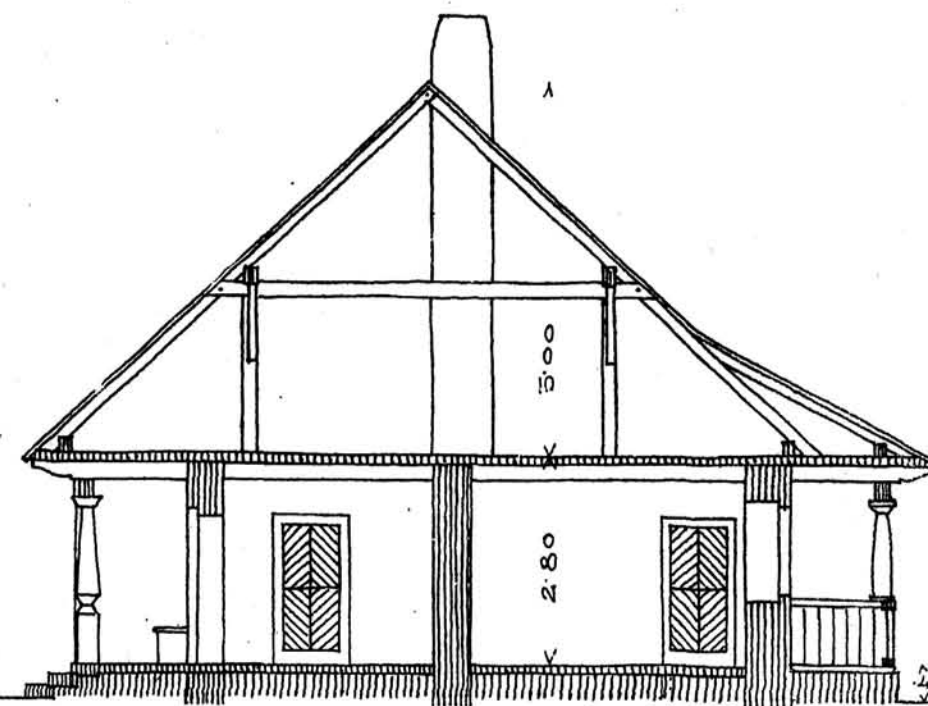


*Skaban*  
1915r.

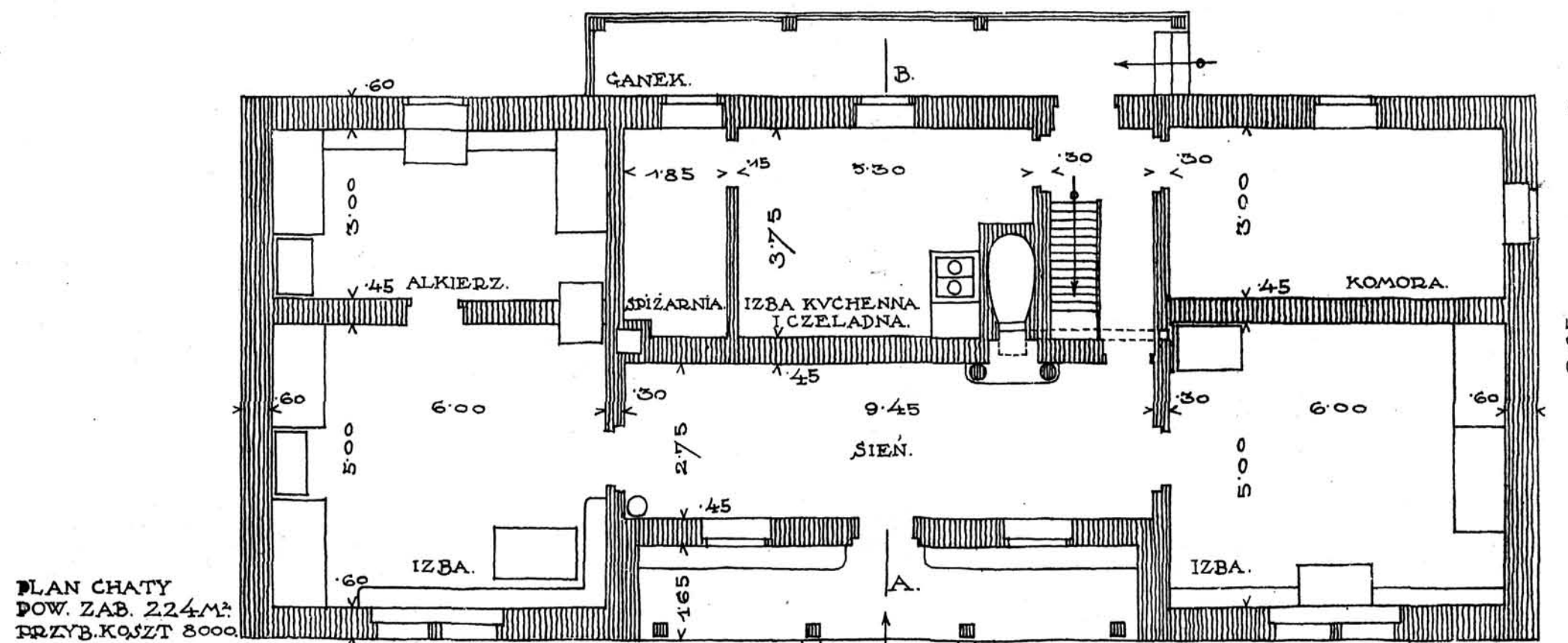
CHATA DLA WŁOŚCIANINA NA 11-20 MORGACH.



STRONA WŚCHODNIA.

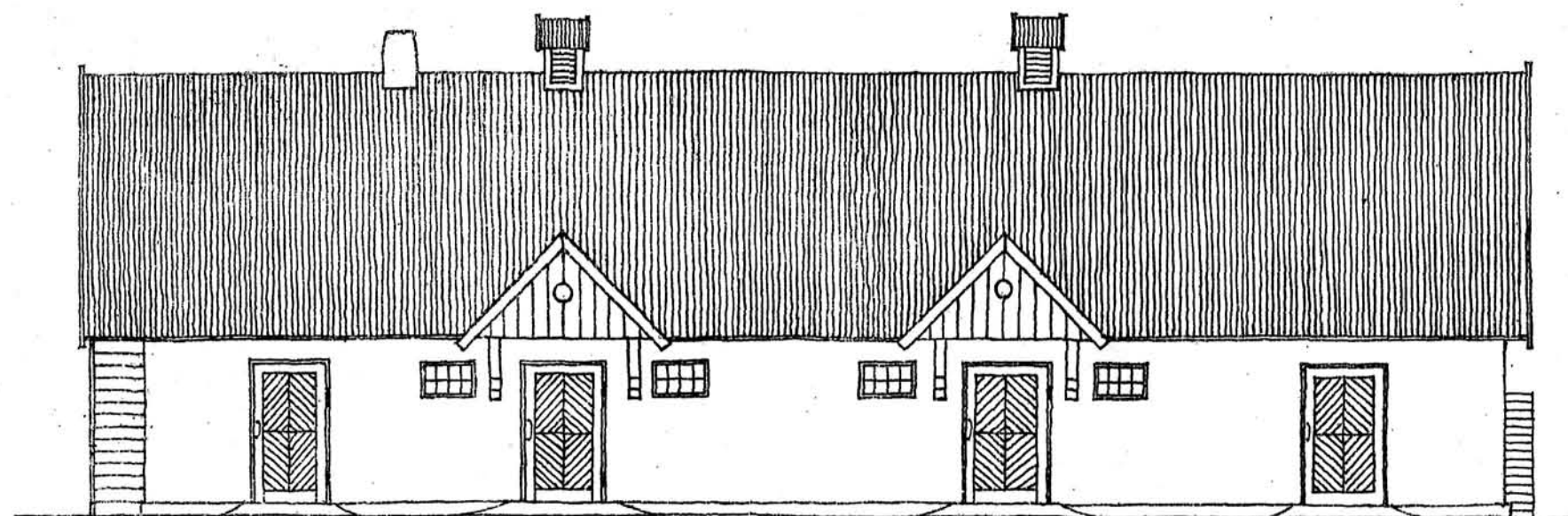


PRZEKRÓJ AB.

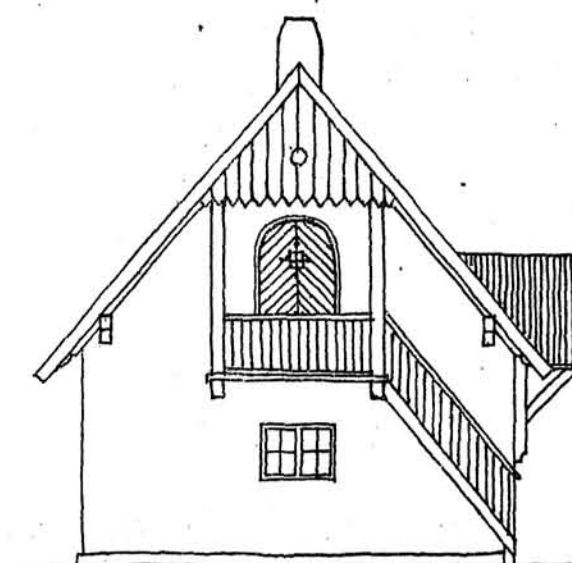


*A. Raban*  
1915, r.

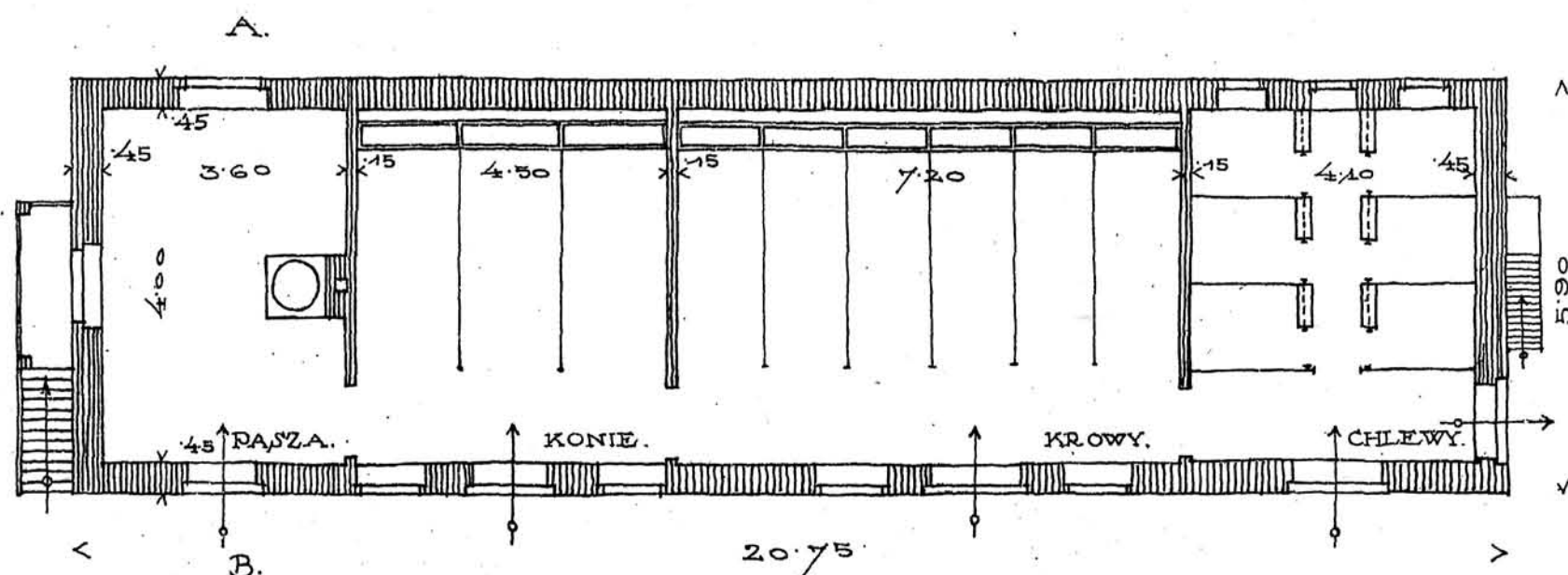
CHATA DLA WŁOŚCIANINA NA 11-20 MORGACH.



STRONA WSCHODNIA.

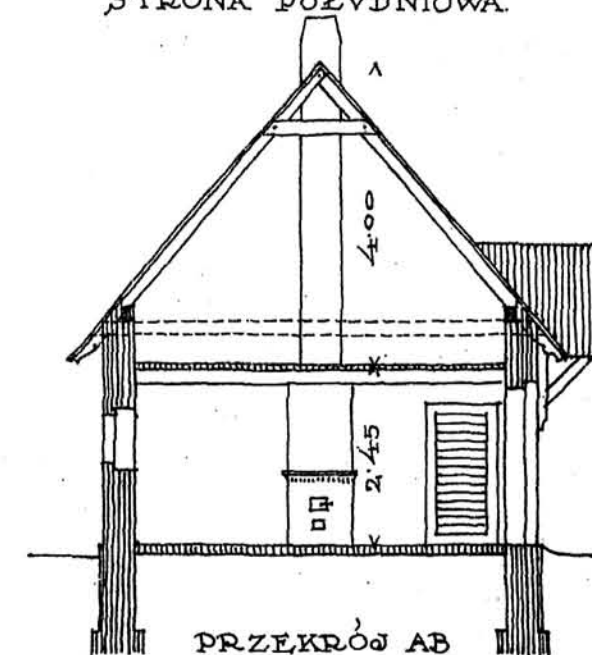
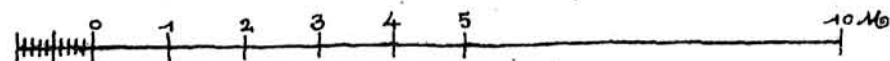


STRONA POŁUDNIOWA.



PLAN STAJNI  
POW. ZAB. 122 M<sup>2</sup>.  
PRZYB. KOSZT 3500 K.

SKALA 1:100.

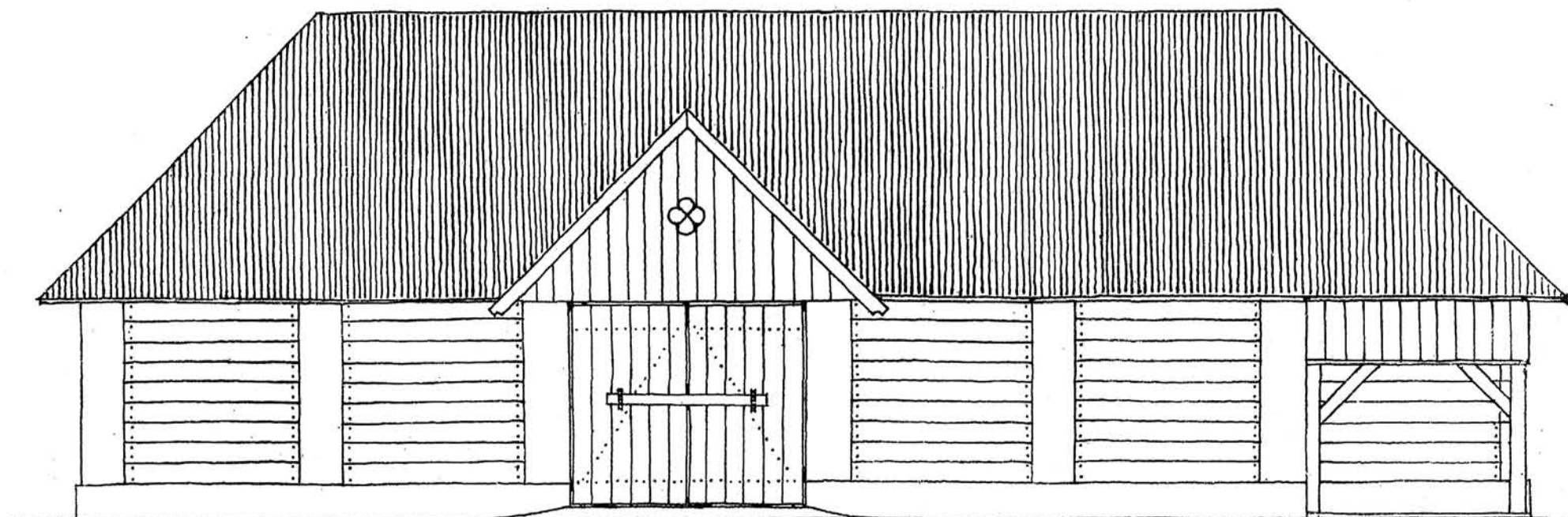


PRZĘKRÓJ AB

*Flaban.*  
1915r.

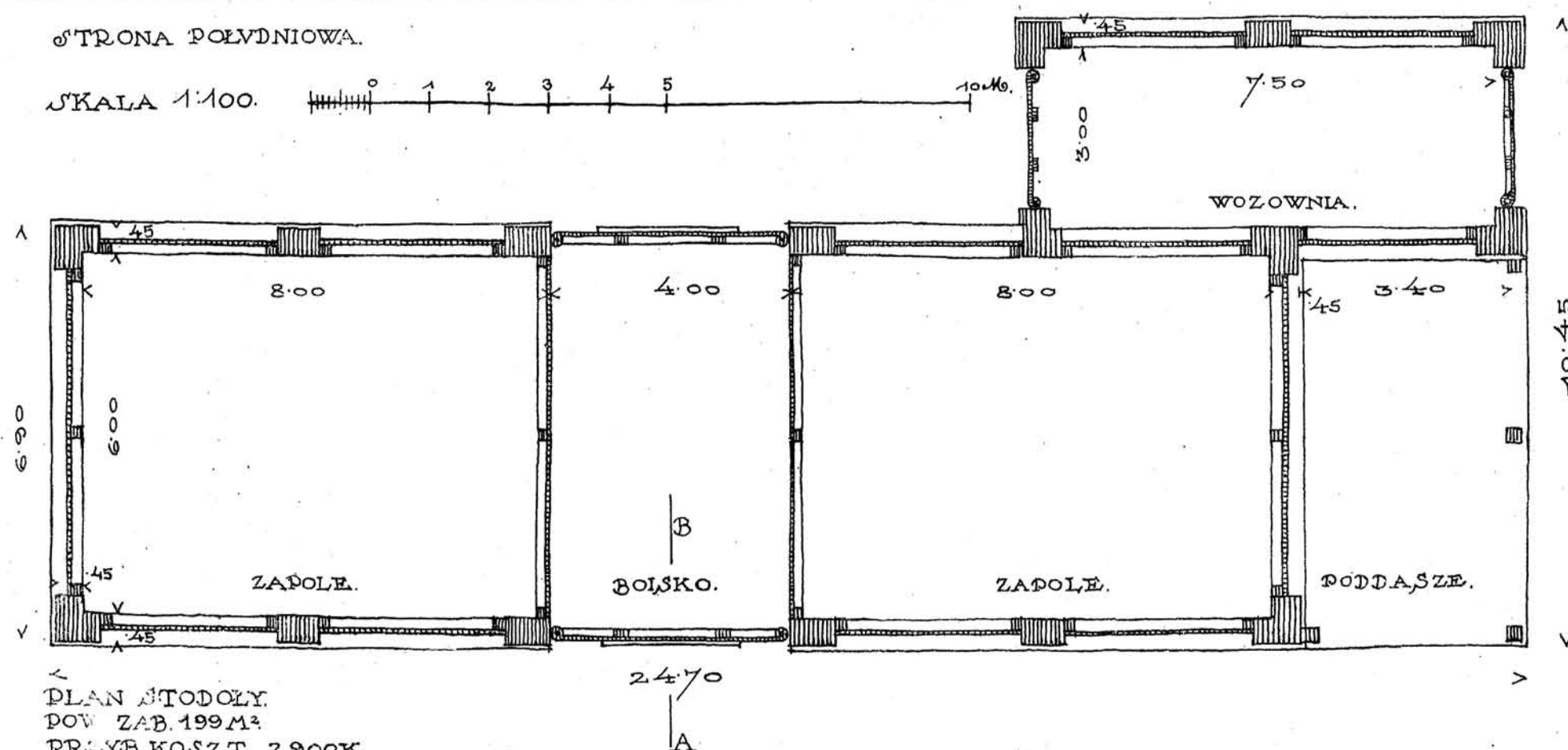
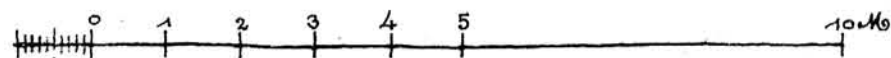
STAJNIA DLA WŁOŚCIANINA NA 11-20 MORGACH



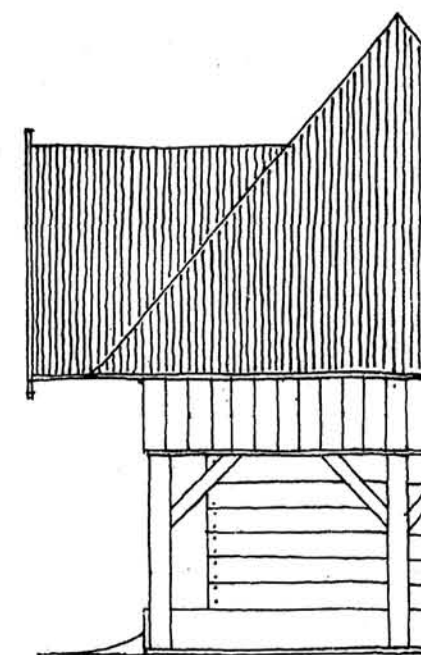


STRONA POŁUDNIOWA.

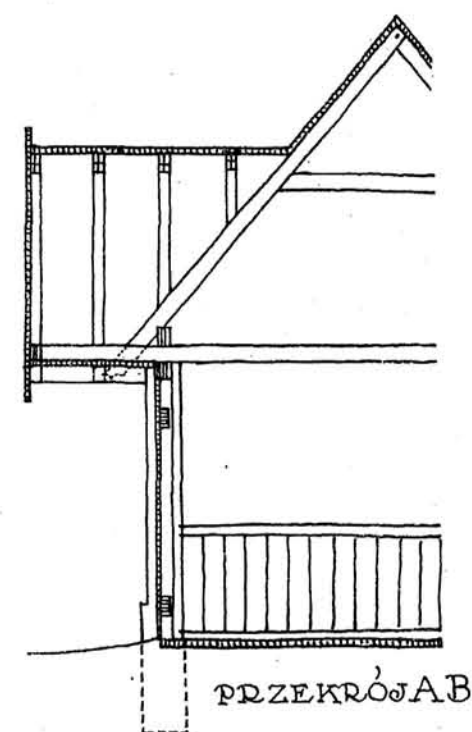
SKALA 1:100.



PLAN STODOŁY.  
POW. ZAB. 199 M<sup>2</sup>.  
PRZYB. KOSZT 2900 K.



STRONA ZACHODNIA.



*S. Kaban*  
1915 r.

STODOŁA DLA WŁOŚCIANINA NA 11-20 MORGACH.