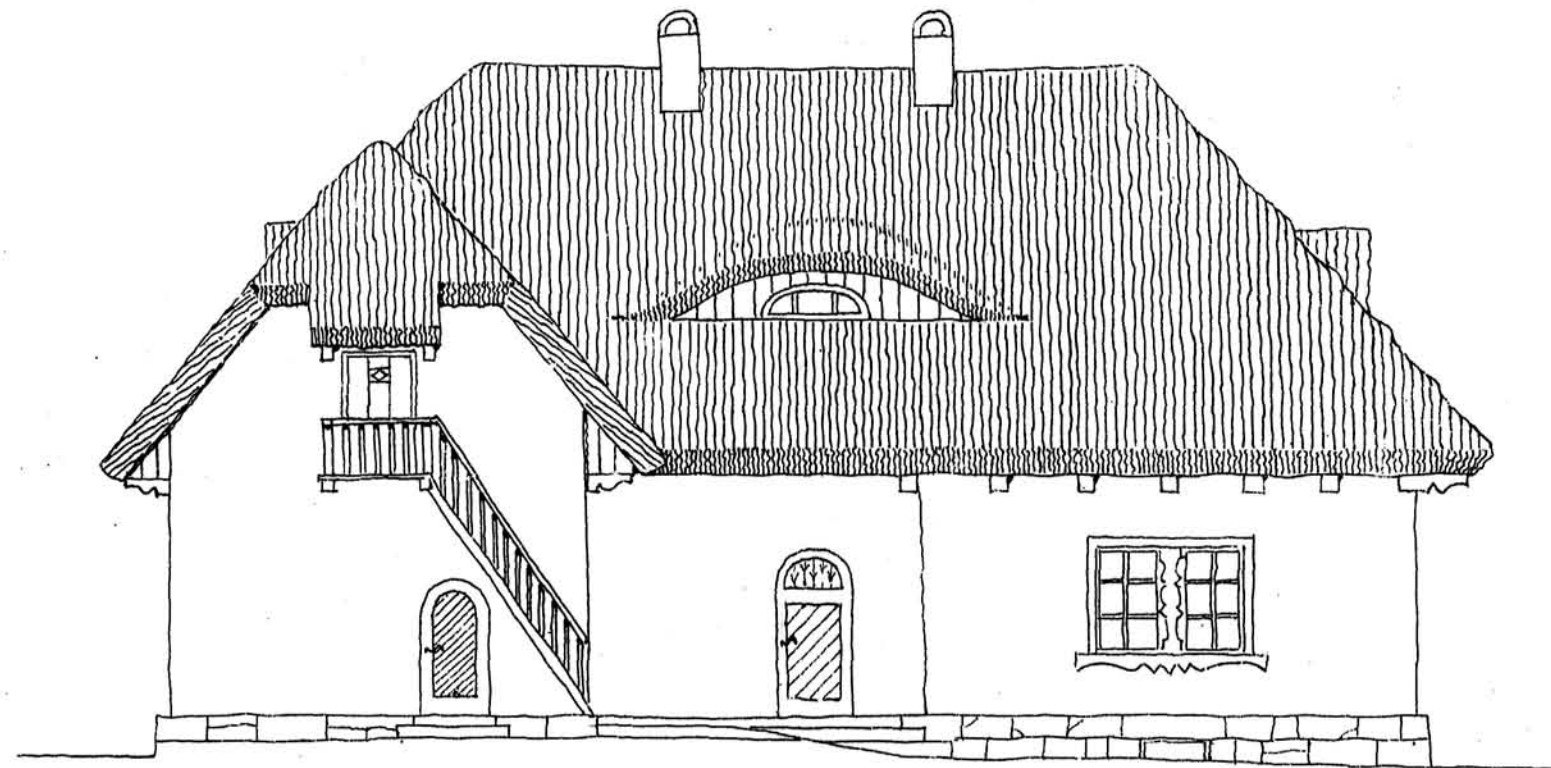


PLAN CHATY
POWIERZCHNIA ZABUDOWANA 215 M²
PRZYBLIŻONY KOSZT 7500 K

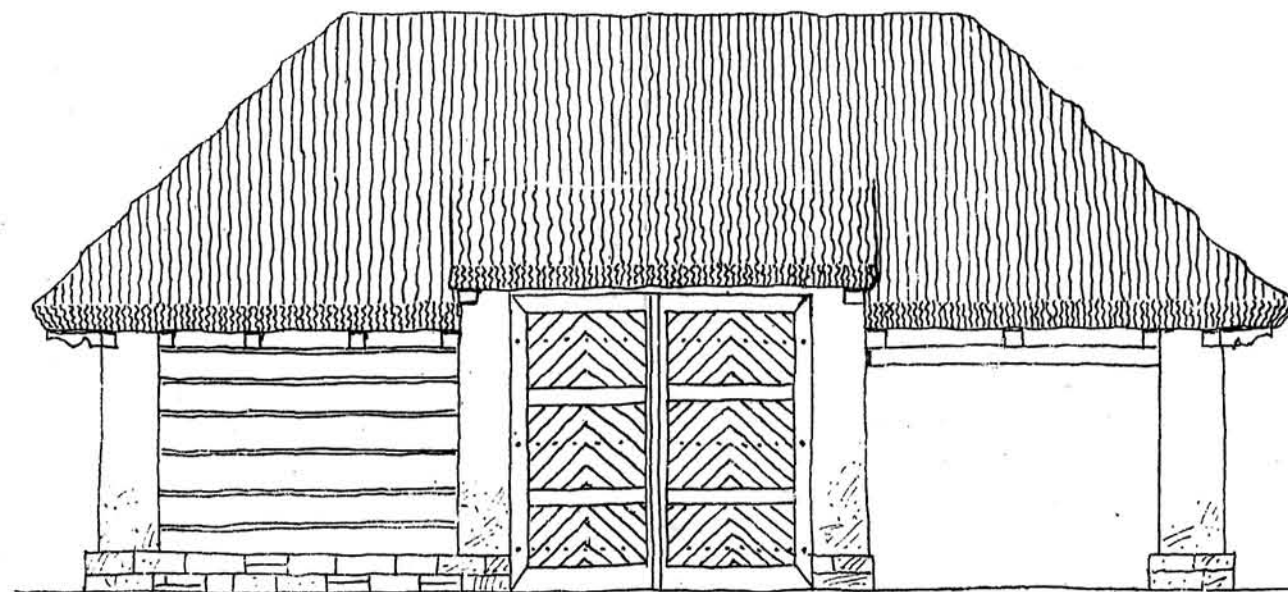
SITUACJA W SKALI 1:500M

Karol Strzyński 1915

CHATA DLA WŁOŚCIANINA NA 3-5 MORCACH

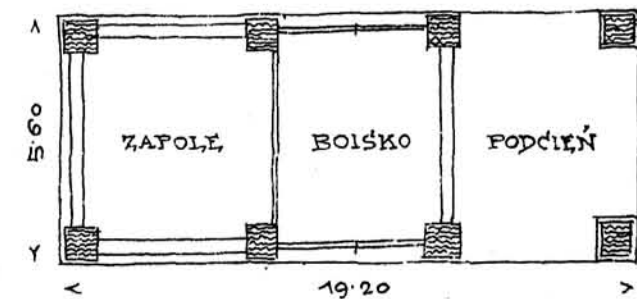
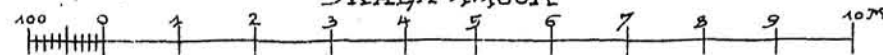


STRONA PÓŁNOCNA



WIDOK STODOŁY

SKALA 1:100M

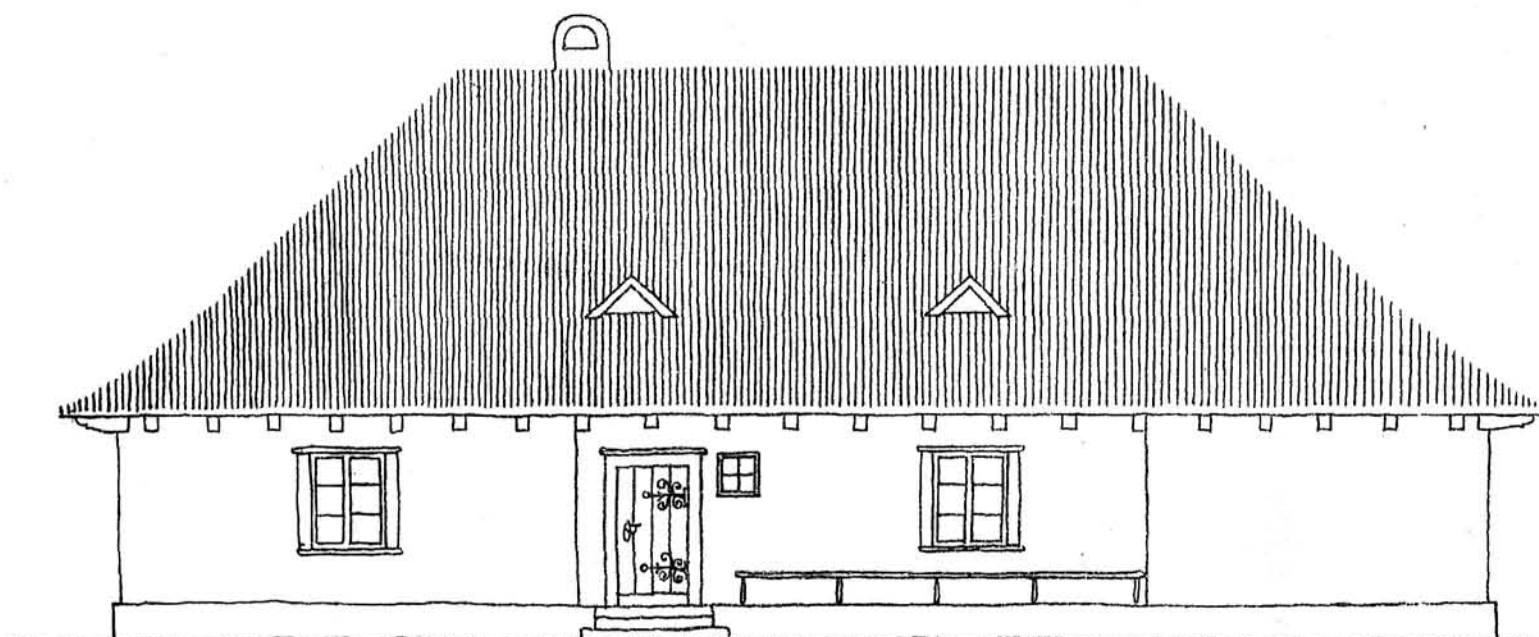


PLAN STODOŁY
SKALA 1:200M

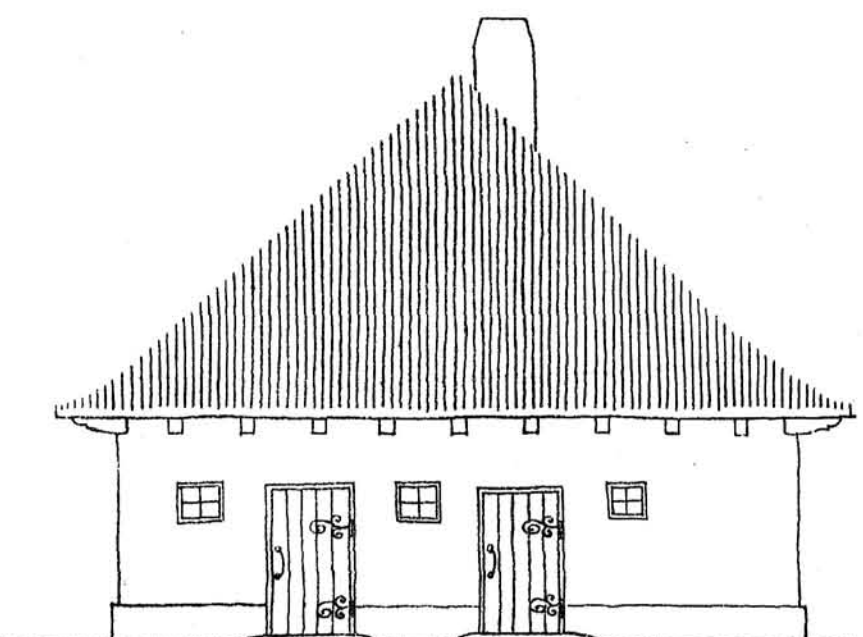
STODOŁA
POWIERZCHNIA ZABUDOWANA 107M²
PRZYBLIŻONY KOSZT 1000K

Karol Styrjewski
1915

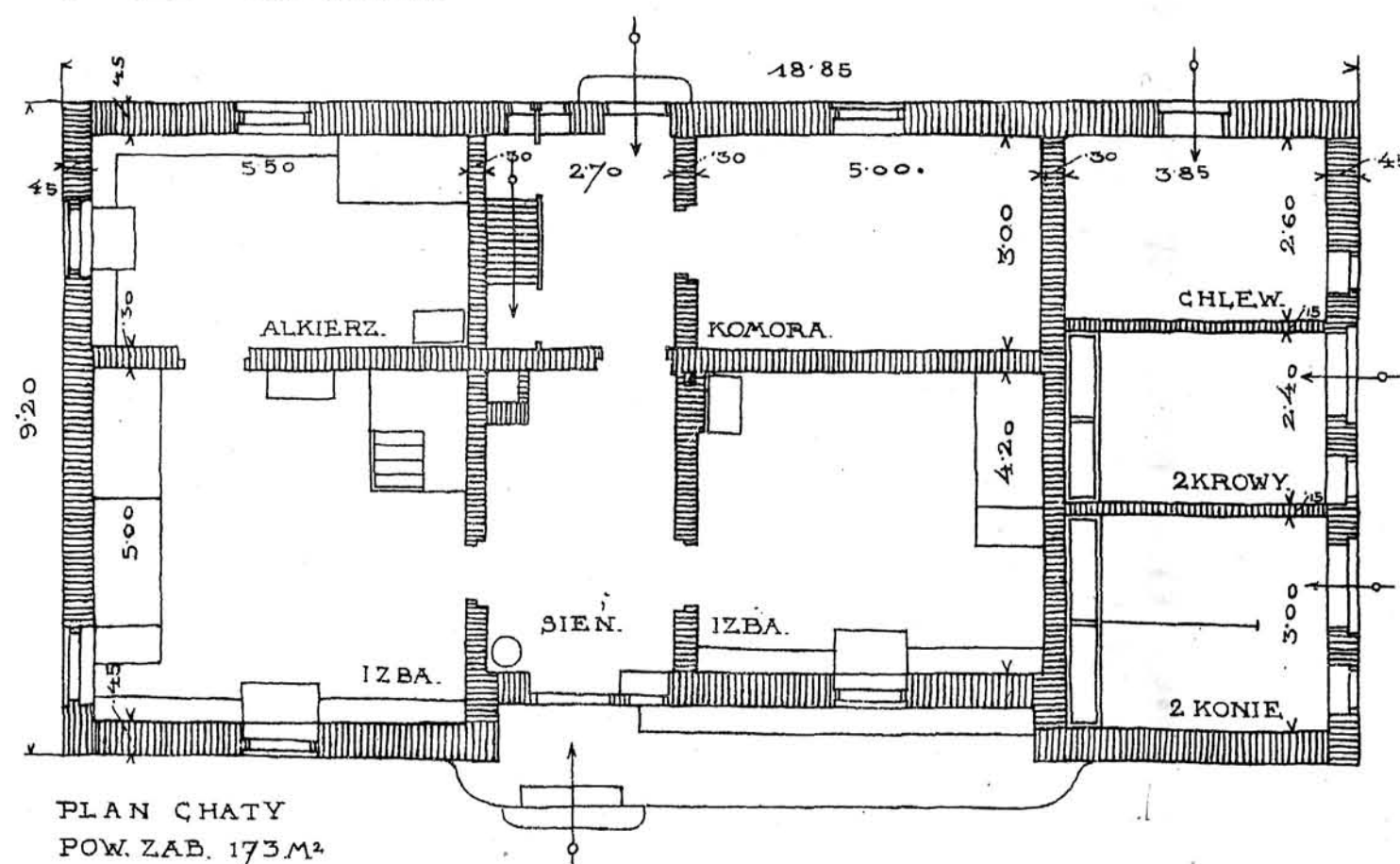
CHATA I STODOŁA DLA WŁOŚCIANINA NA 3-5 MORGACH



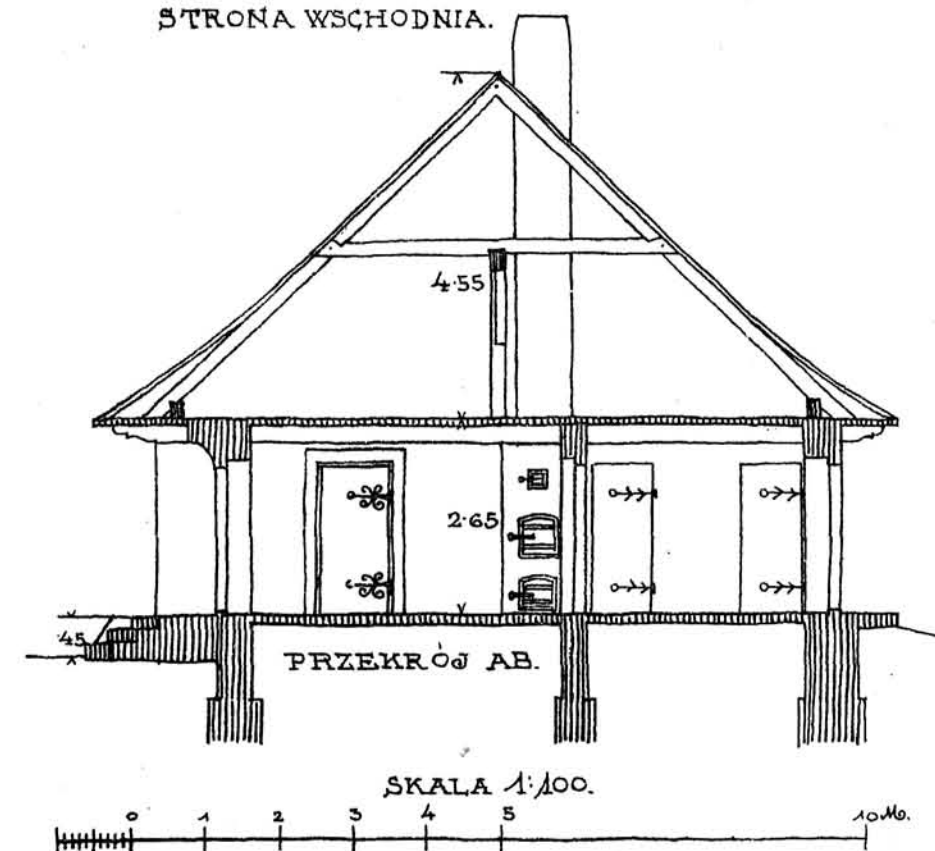
STRONA POLVDNIOWA.



STRONA WSCHODNIA.



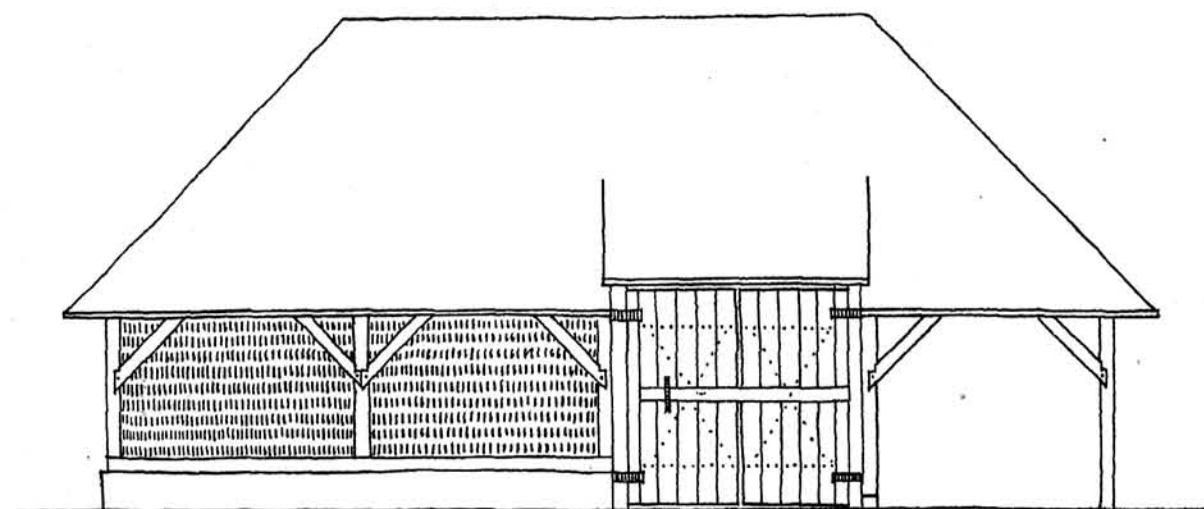
PLAN CHATY
POW. ZAB. 173M²
PRZYBL. KOSZT 6000K



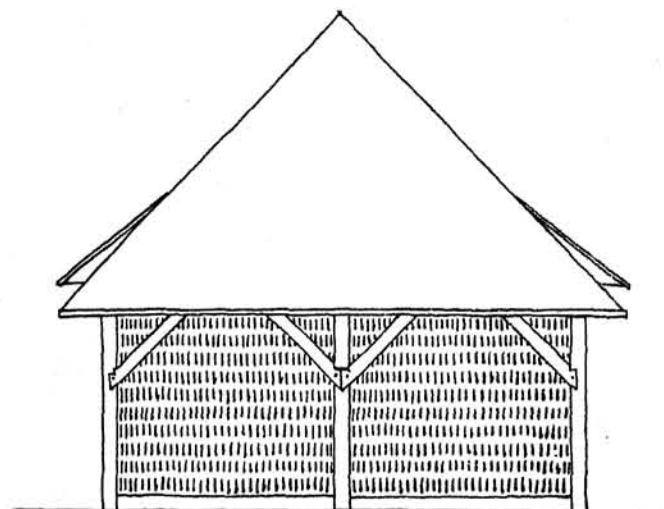
SKALA 1:100.

F. Kabau
1915.

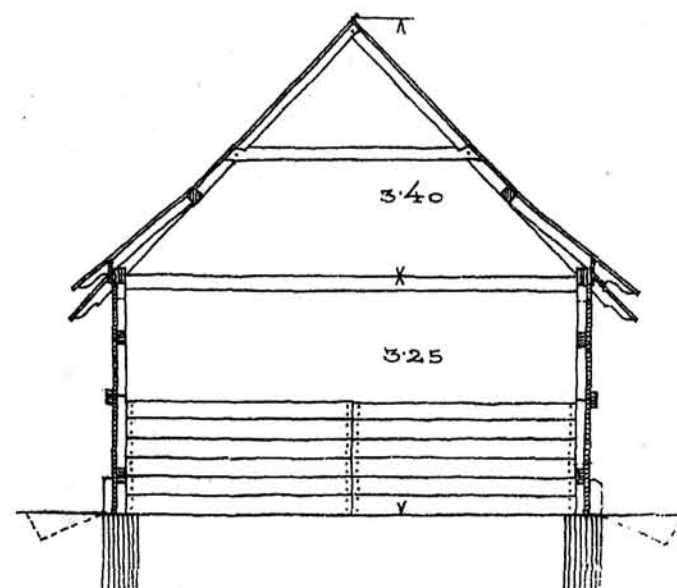
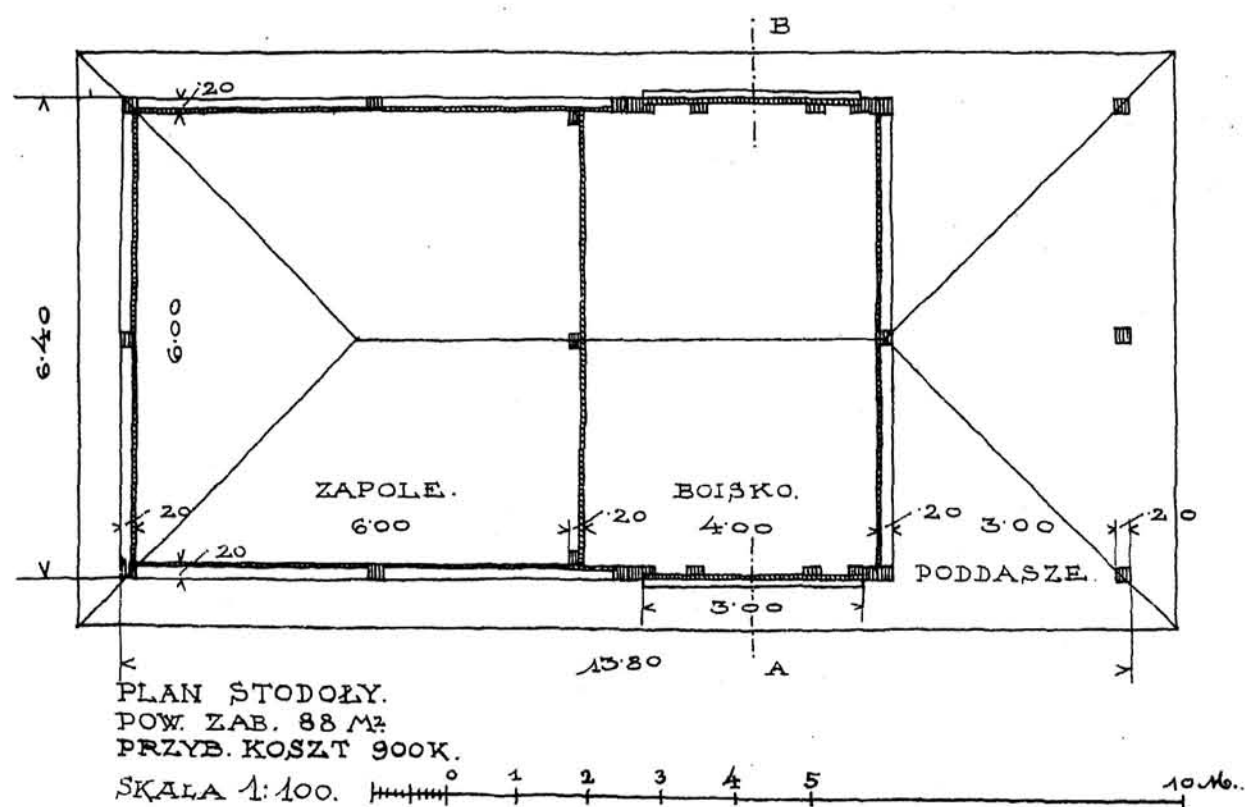
CHATA DLA WŁOŚCIANINA NA 3-6 MORGACH.



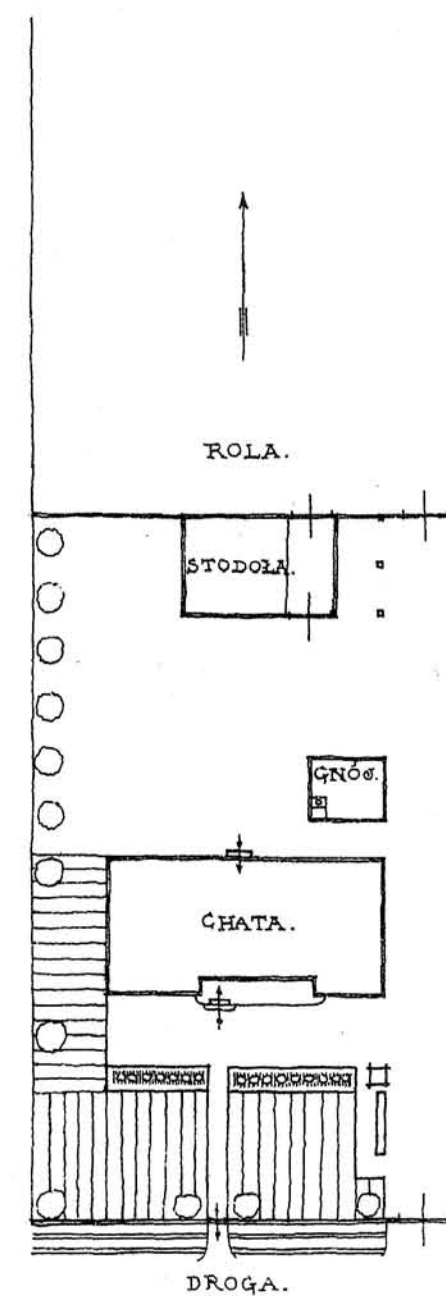
STRONA POŁUDNIOWA.



STRONA WŚCHODNIA.

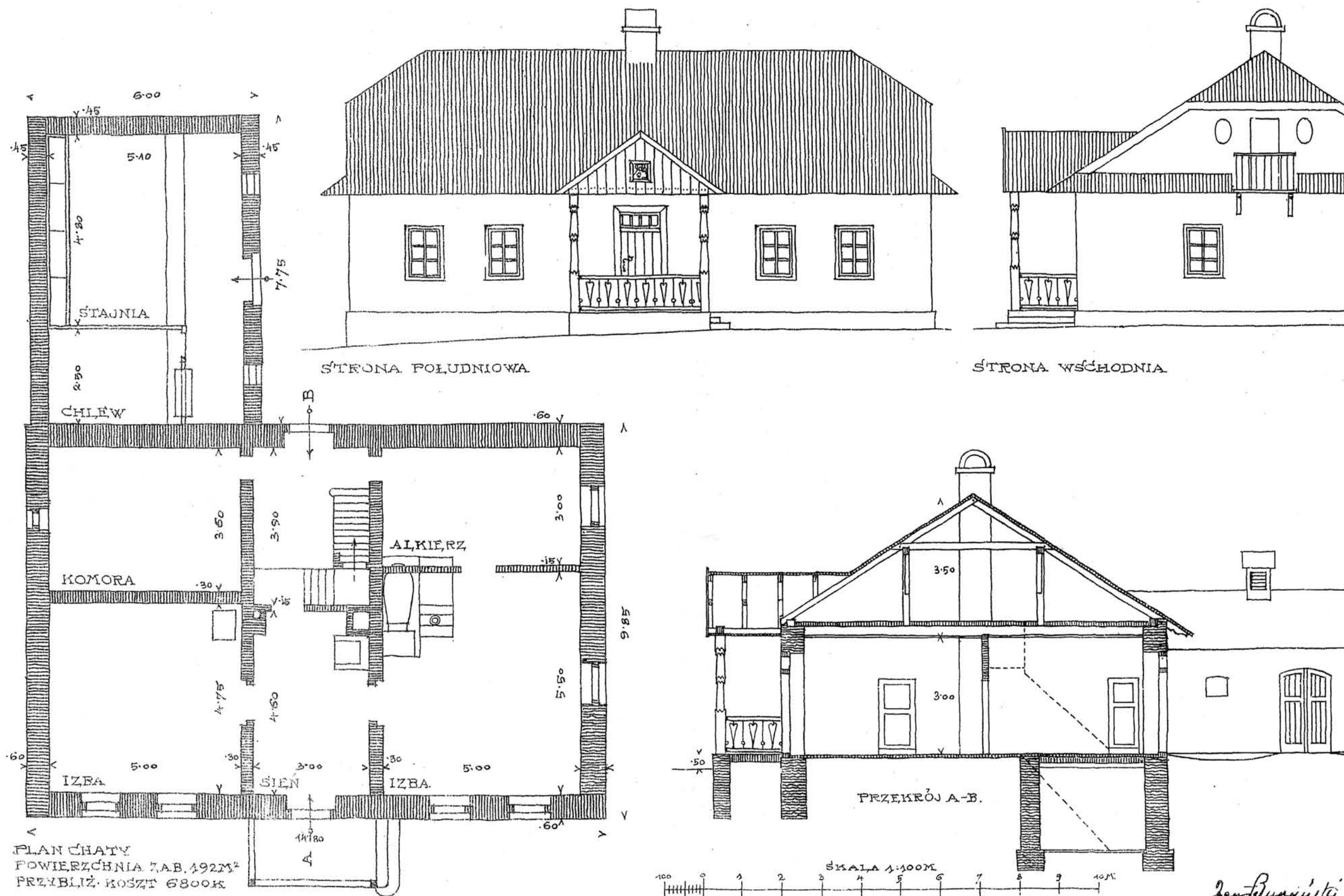


PRZĘKRÓJ AB.

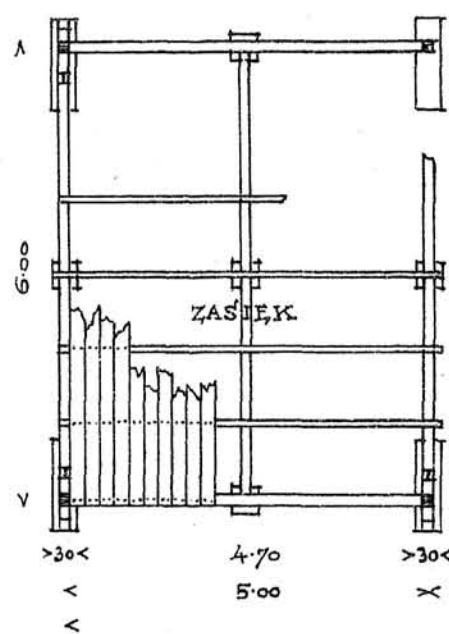
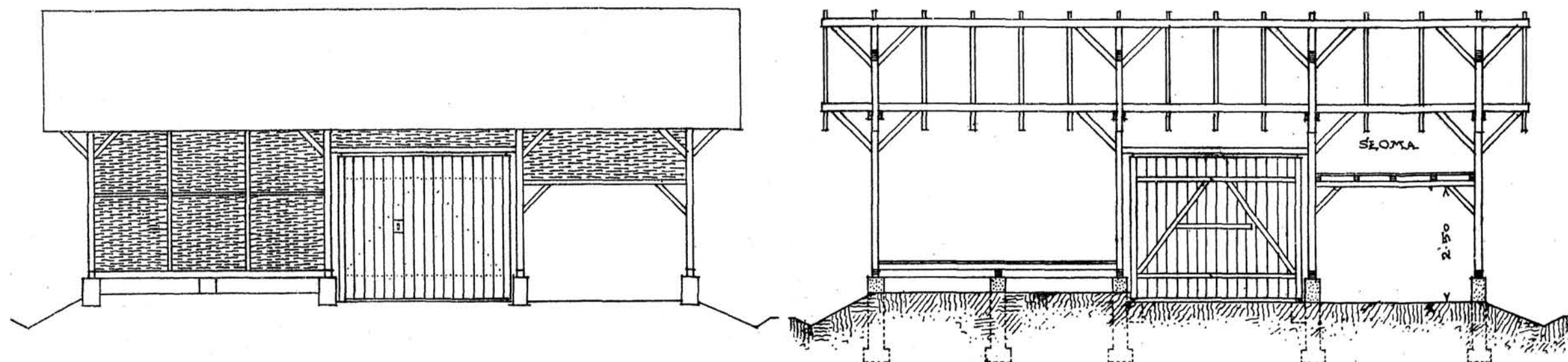


SYTUACJA.
SKALA 1:500.

Kaban
1915.



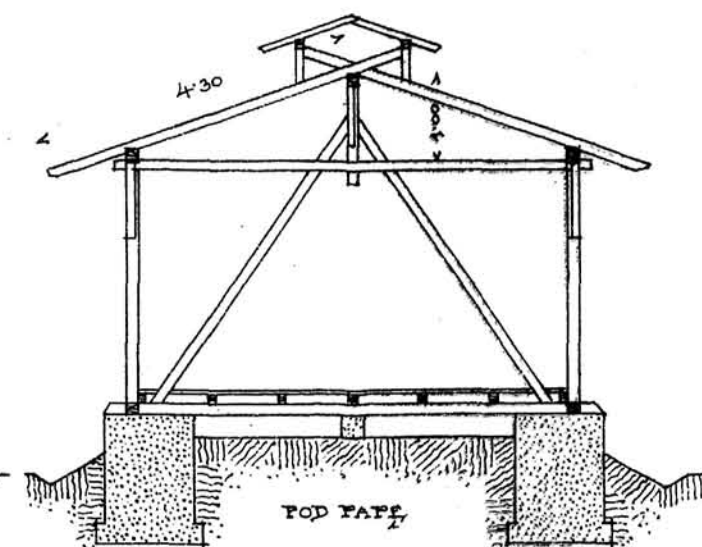
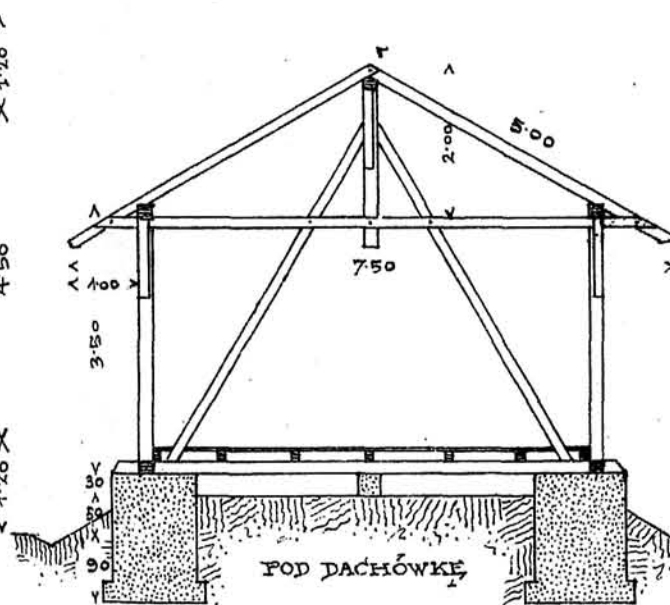
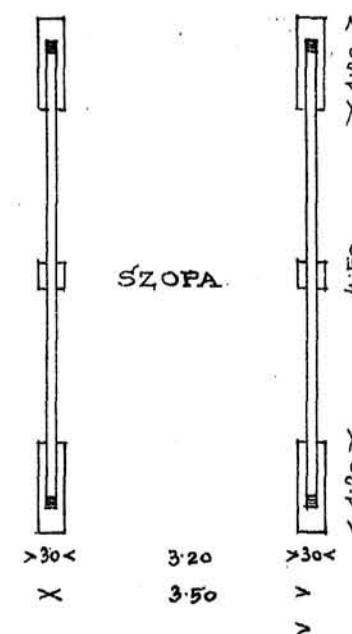
CHATA DLA WŁOŚCIANINA NA 3-5 MORGACH



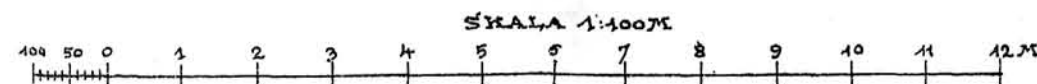
BOISKO

SZOFA

3.70
4.00
12.50



POW. ZAB. 75M²
PRZYBL. KOSZT 900K.



Handwritten signature

STODOŁA DLA WŁOŚCIANINA NA 3-5MORGACH