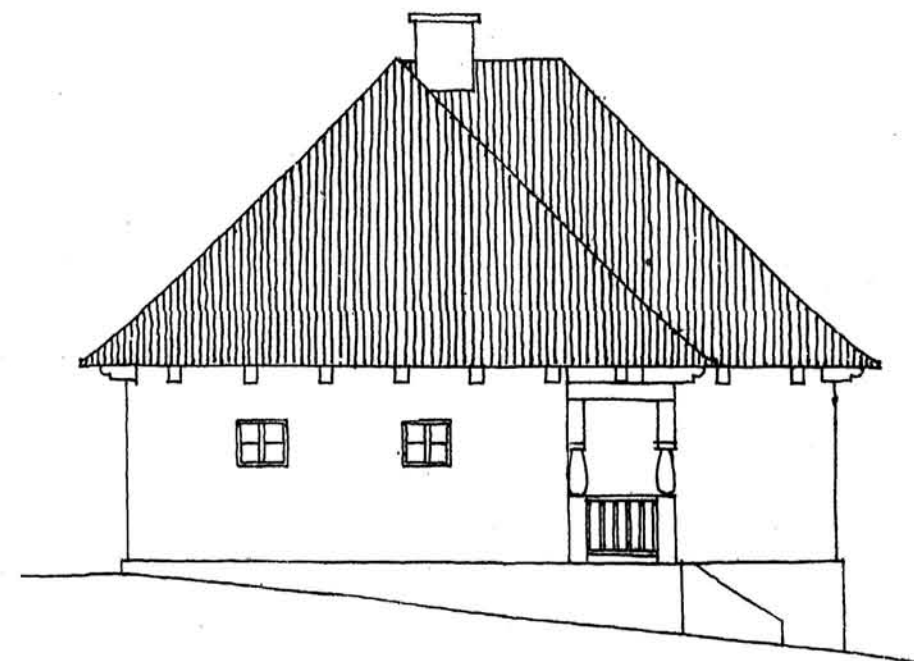
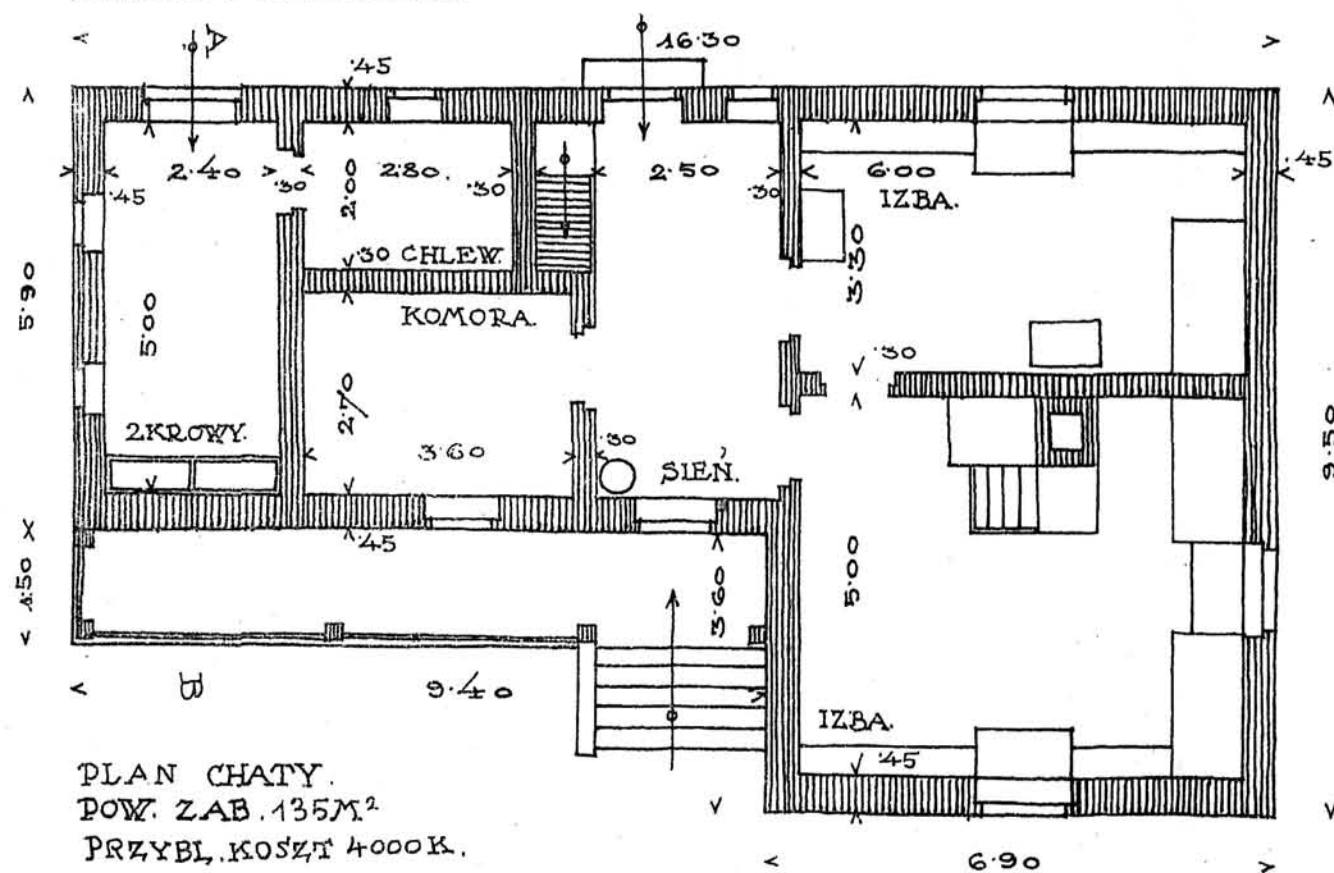


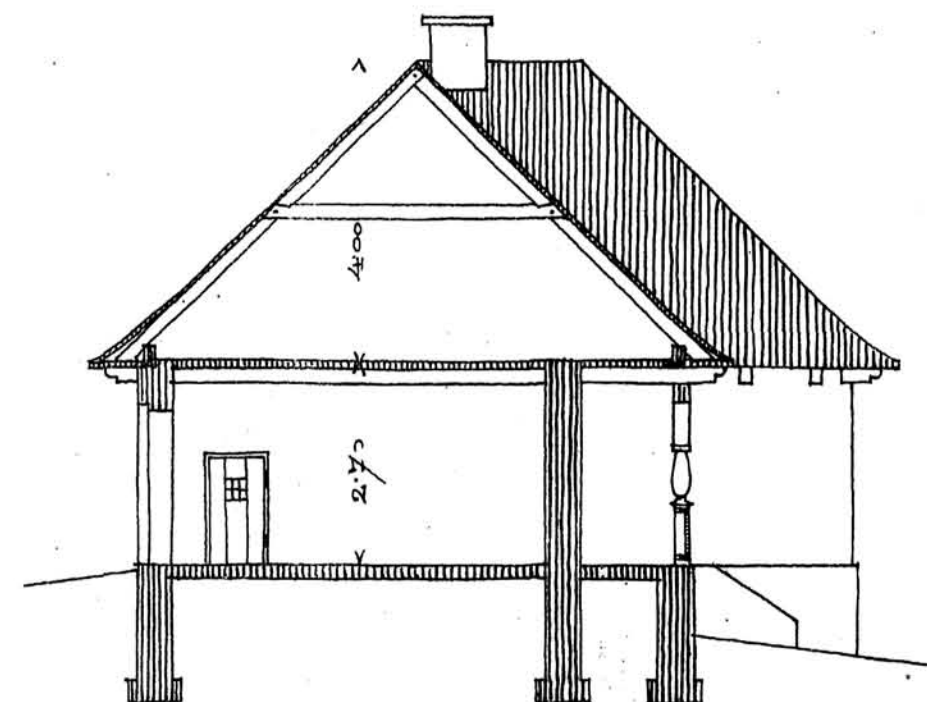
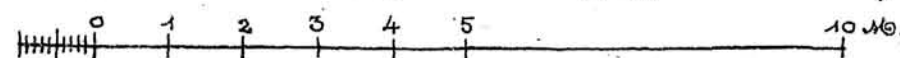
STRONA POŁUDNIOWA.



STRONA ZACHODNIA.

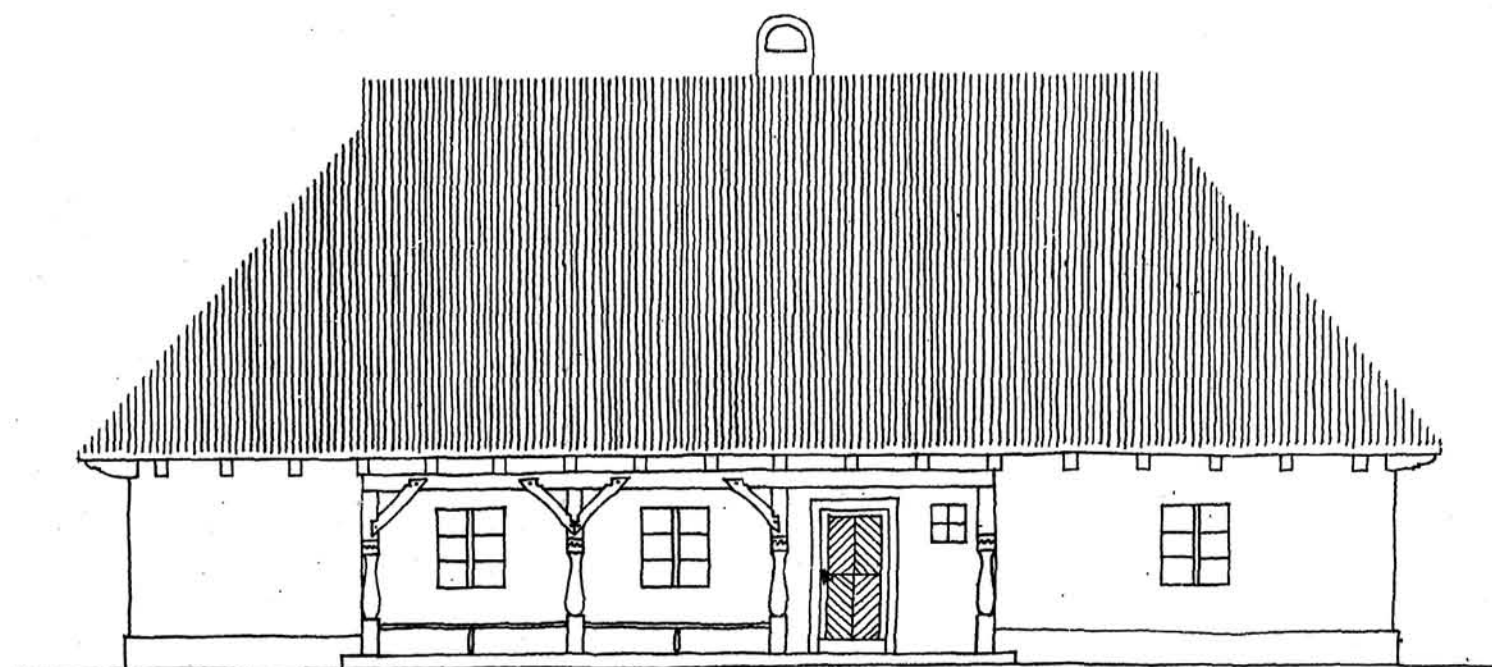


SKALA 1:100

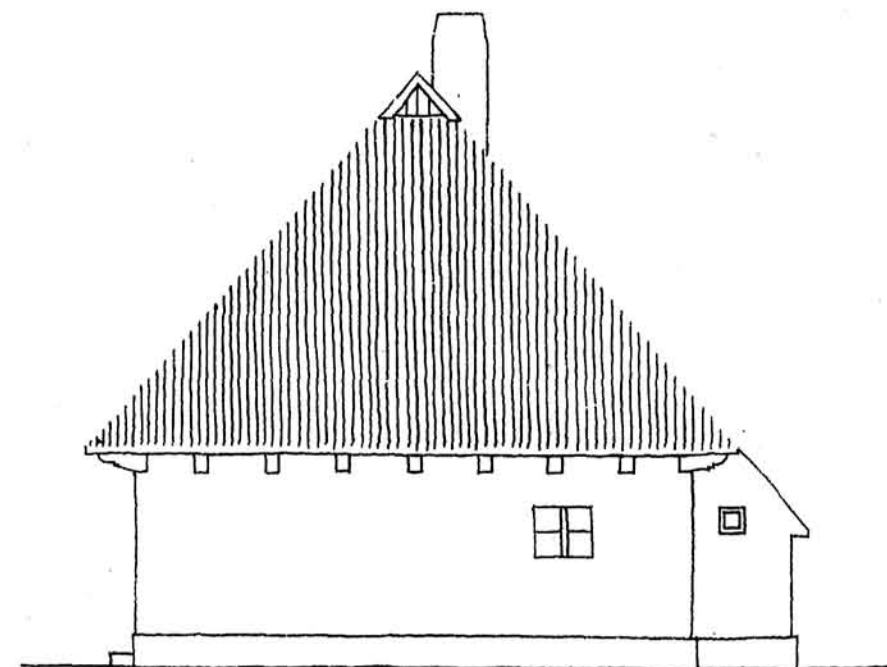


PRZEKRÓJ AB.

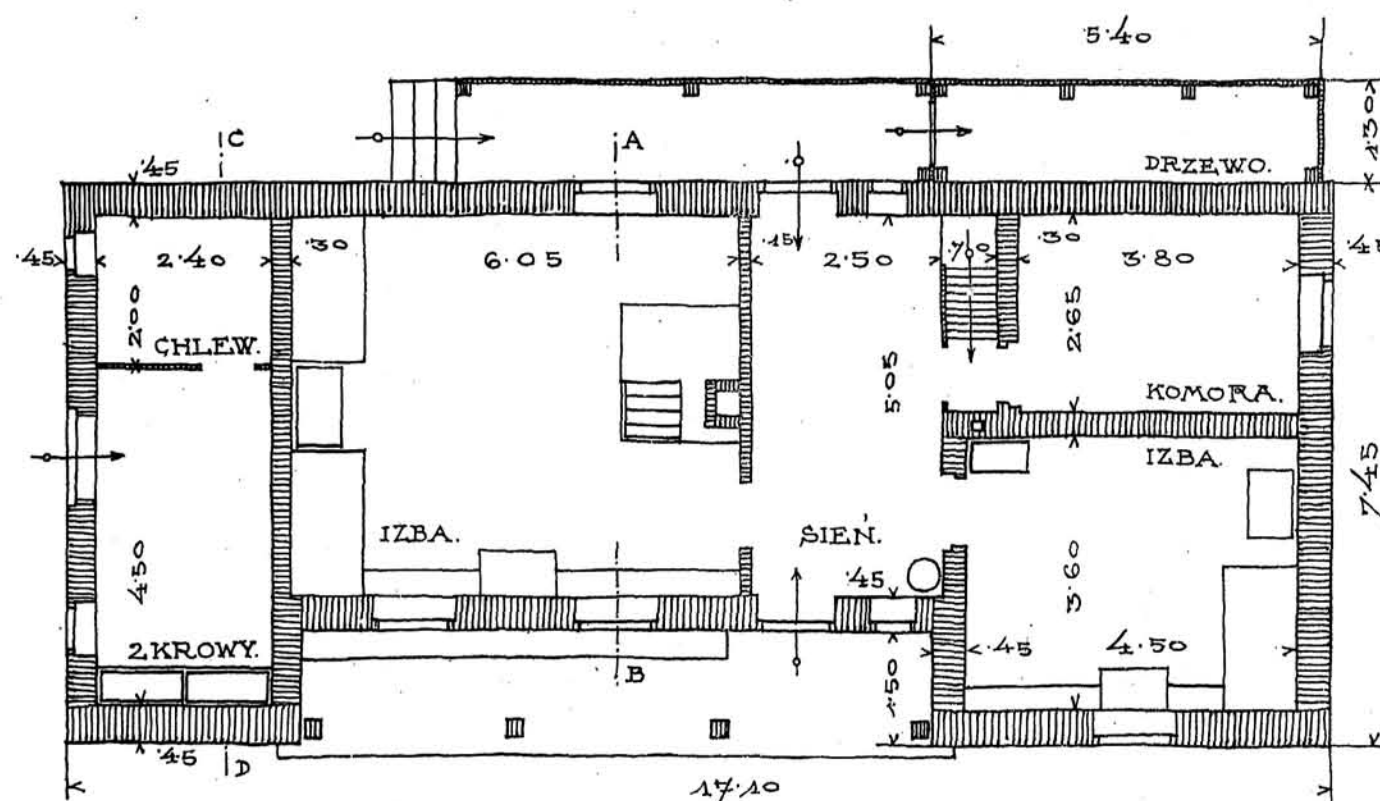
Helmut W. S.
Kaban
1915. r.



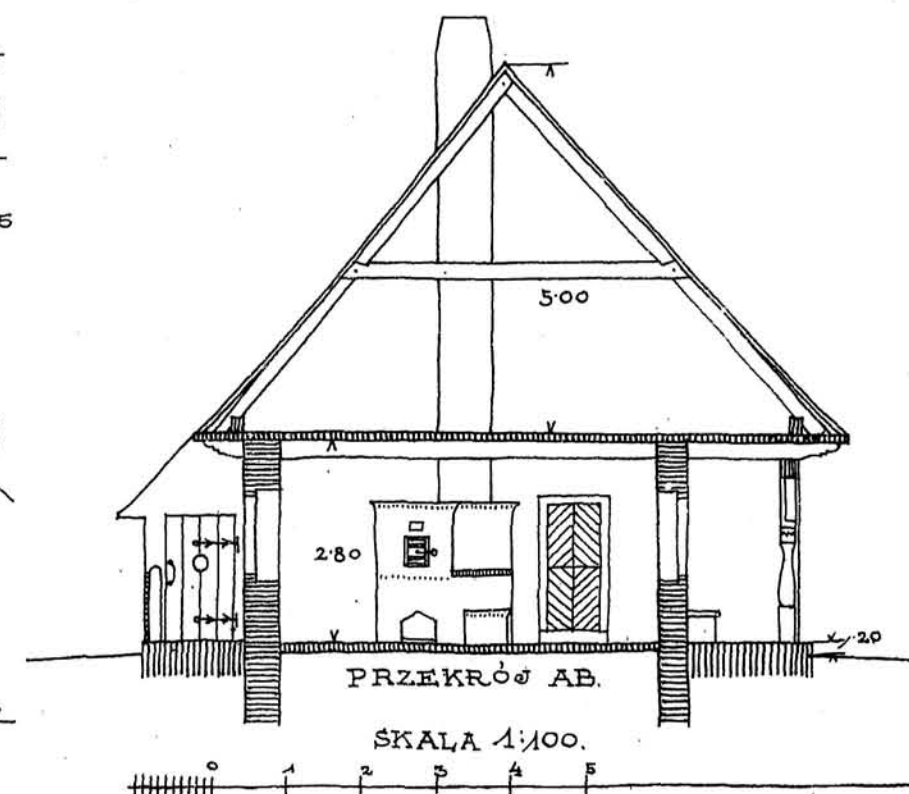
STRONA POŁYDNIOWA.



STRONA WŚCHODNIA.

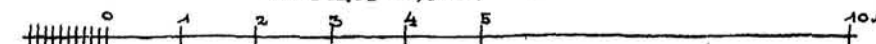


PLAN CHATY.
POW. ZAB. 127 M²
PRZYBL. KOSZT - 4300 K.



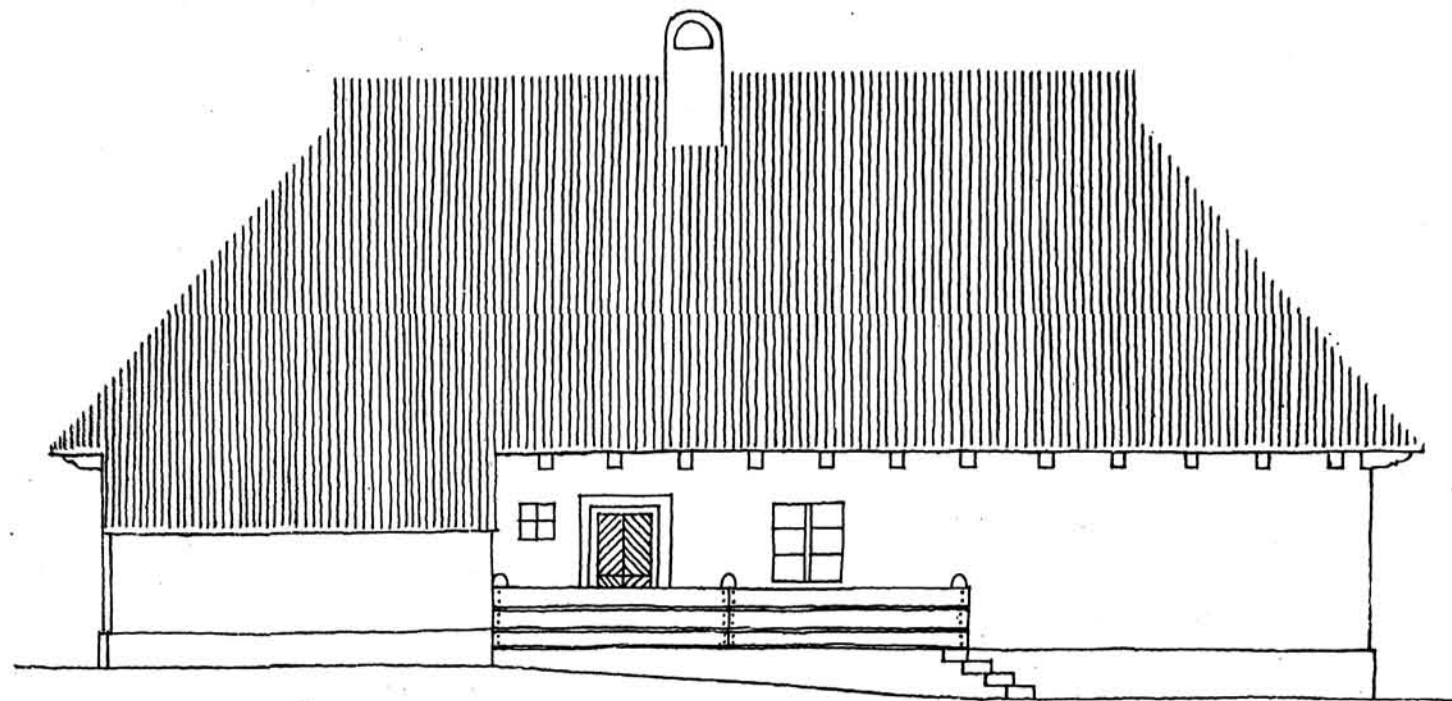
PRZEMKROJ AB.

SKALA 1:100.

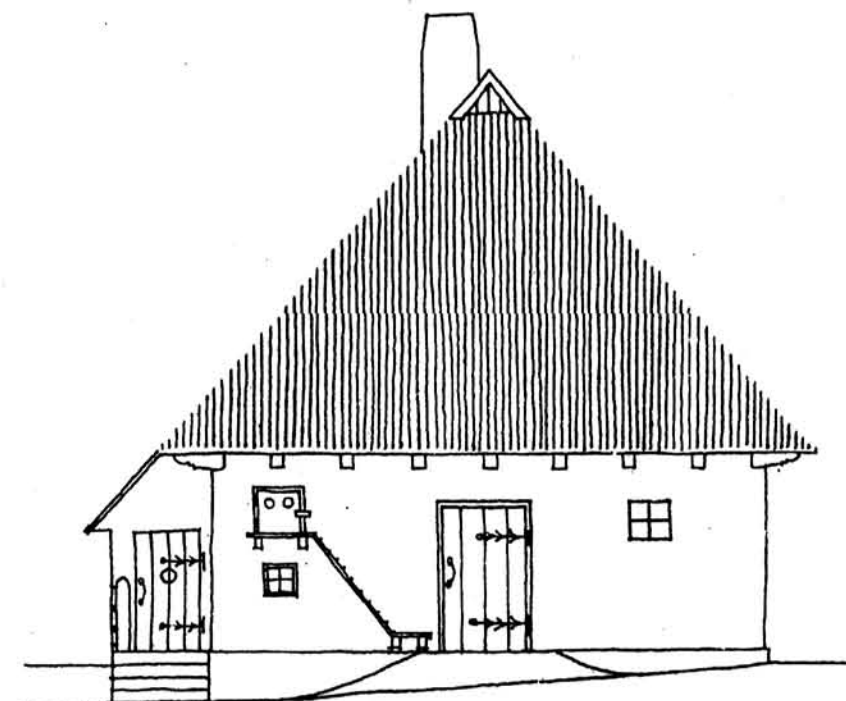


Kaban
1915. r.

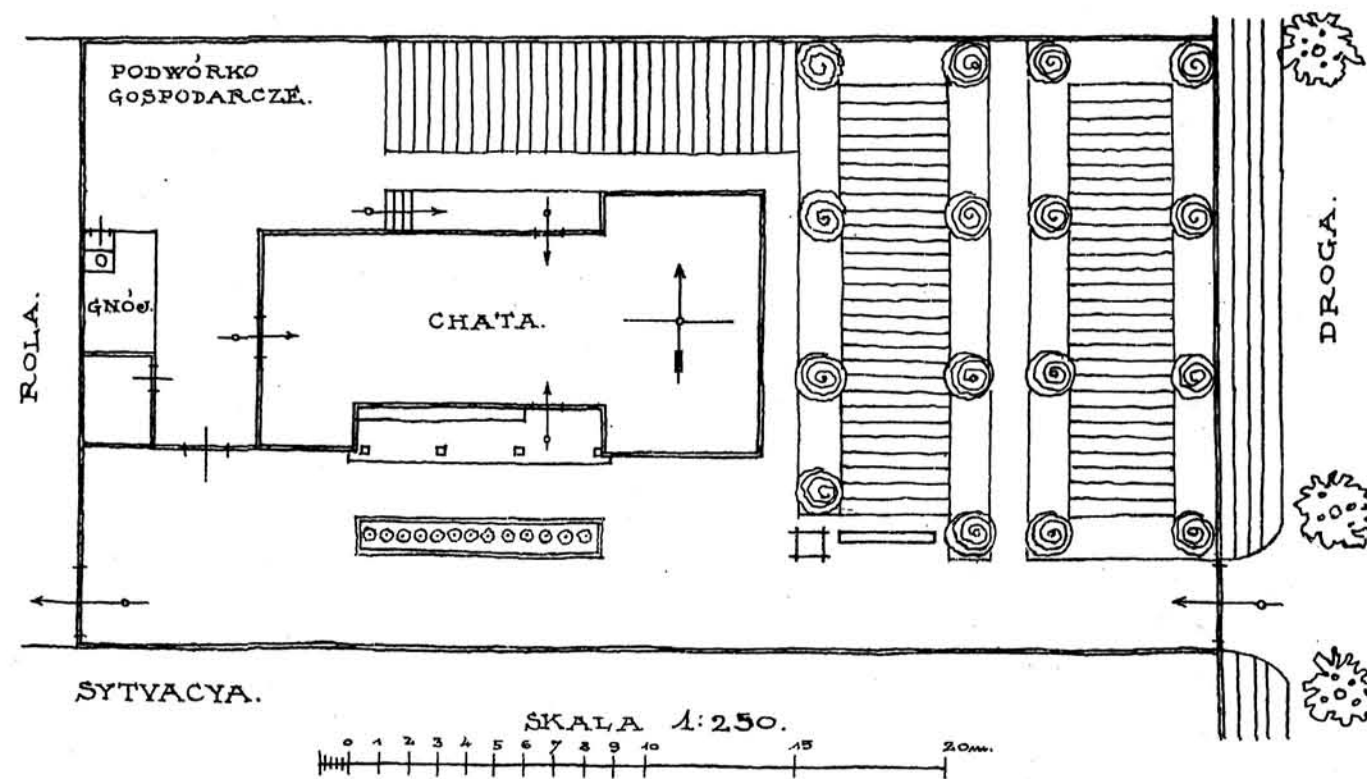
W. Robinson



STRONA PÓŁNOCNA.

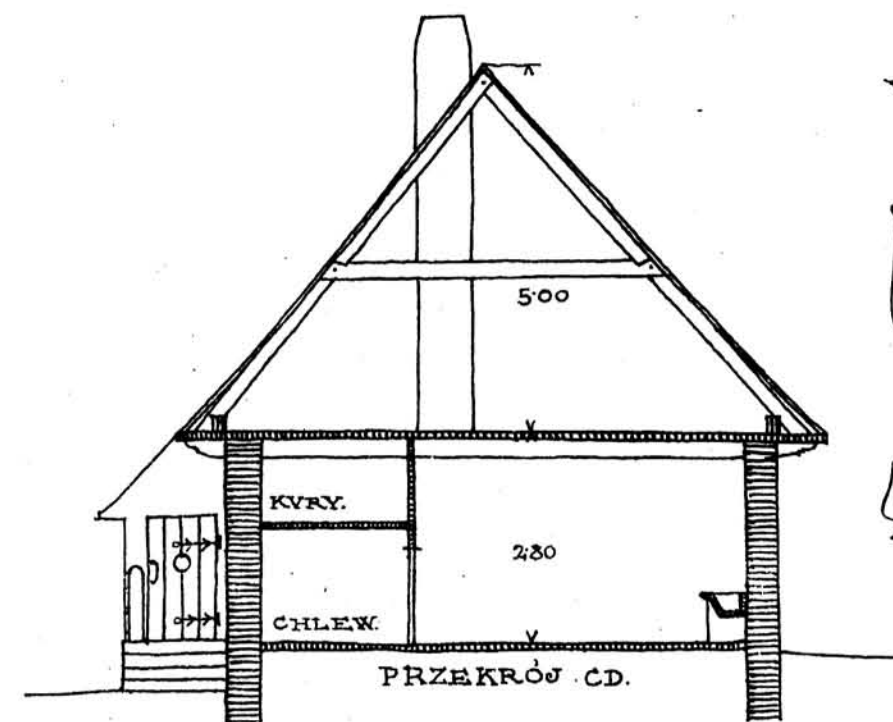
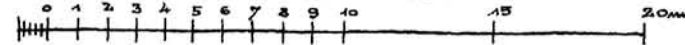


STRONA ZACHODNIA.



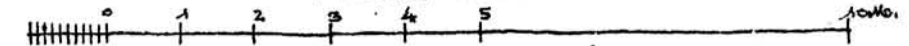
SYTYWACJA.

SKALA 1:250.



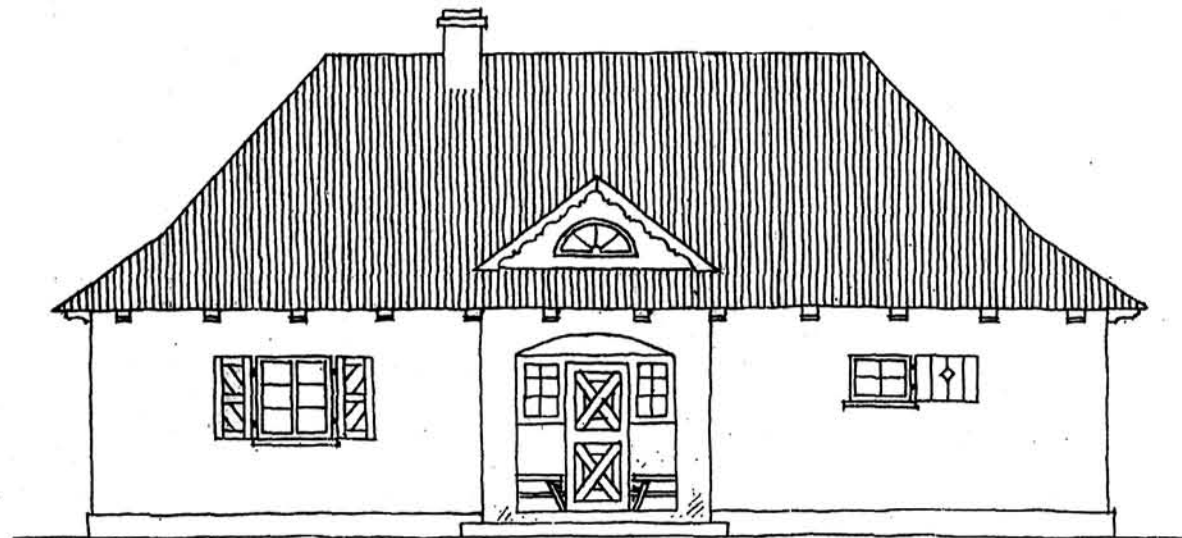
PRZĘKRÓJ .CD.

SKALA 1:100.

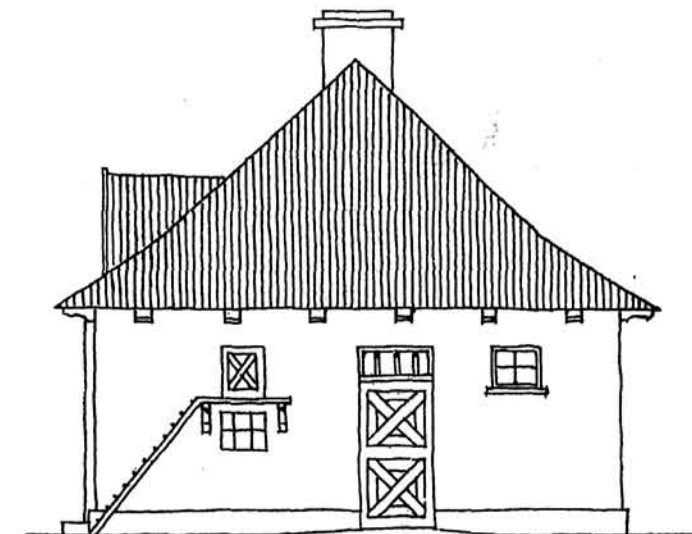


Kaban
1915.r.

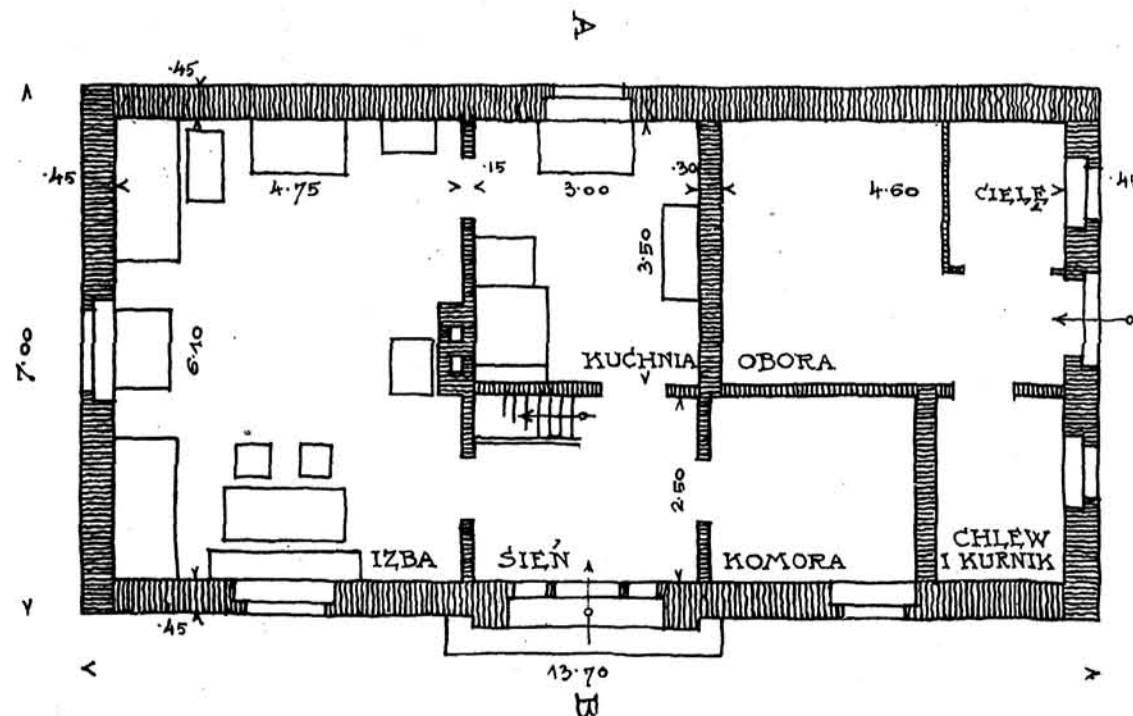
CHATA DLA WŁOŚCIANNA NA 1-2 MORGACH.



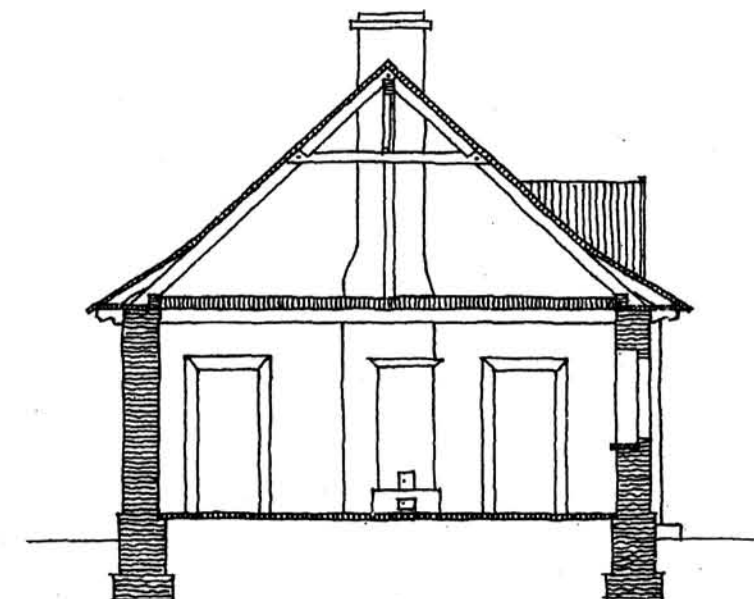
STRONA POŁUDNIOWA



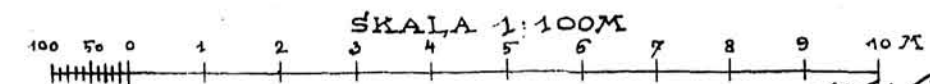
STRONA WSCHODNIA



PLAN CHATY
POWIERZCHNIA ZABUDOWANA 96M²
PRZYBLIŻONY KOSZT 3400K

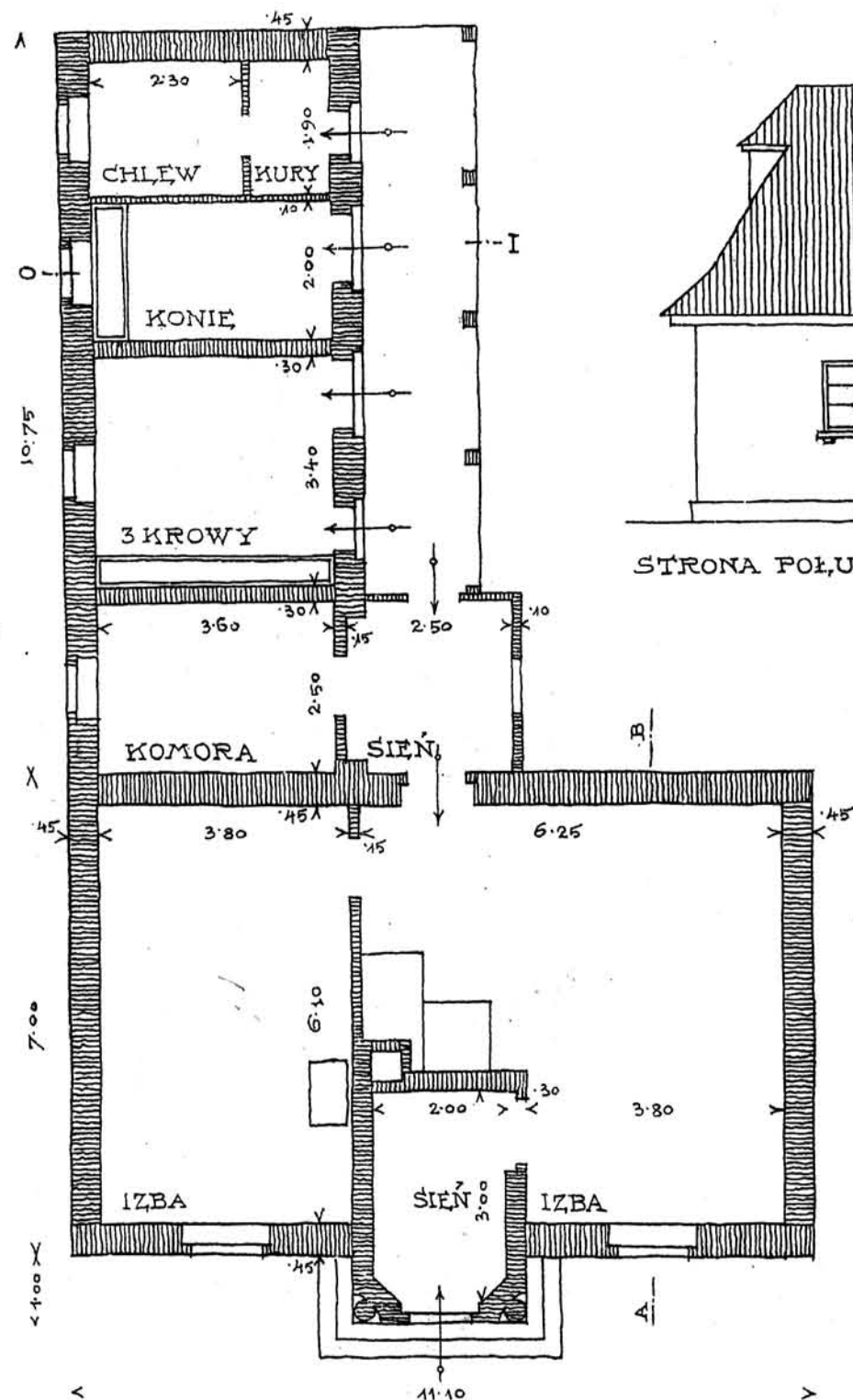


PRZĘKRÓJ A-B.

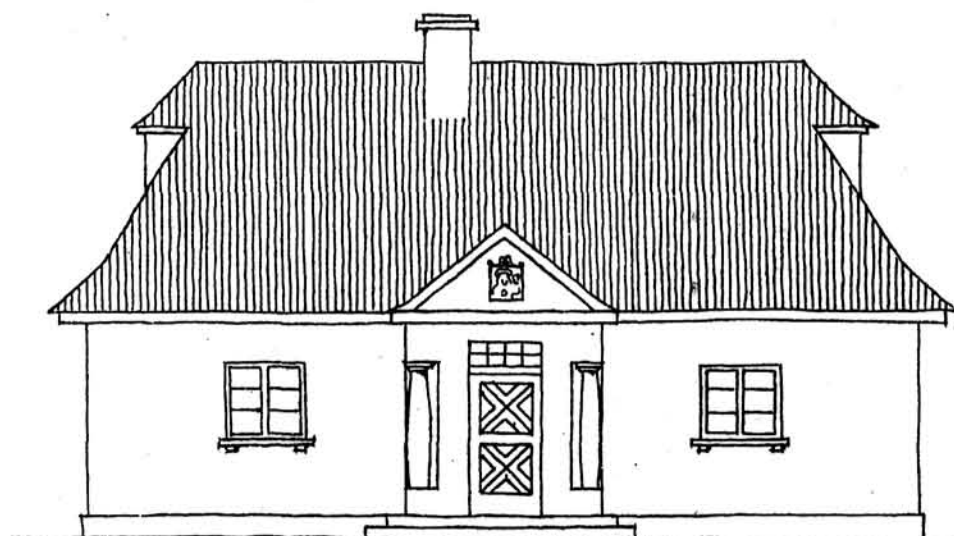


J. Wysocki

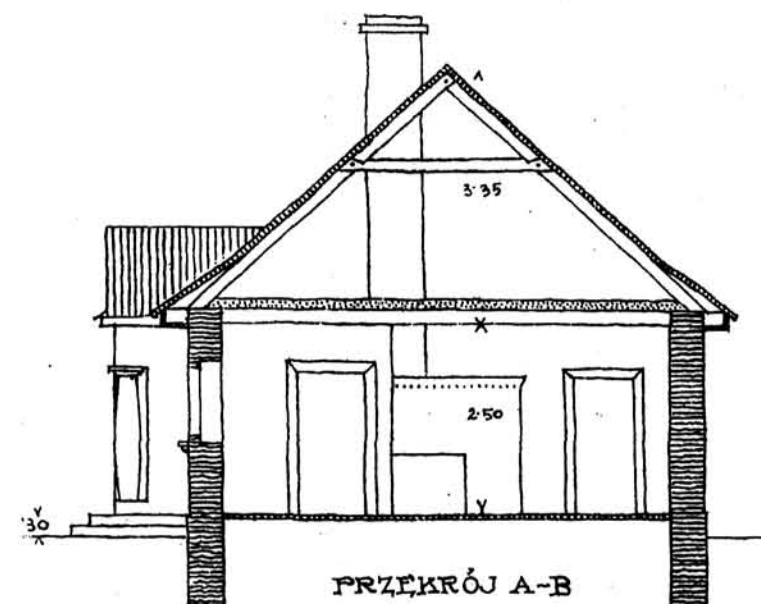
CHATA DLA WŁOŚCIANINA NA 1-2 MORGACH.



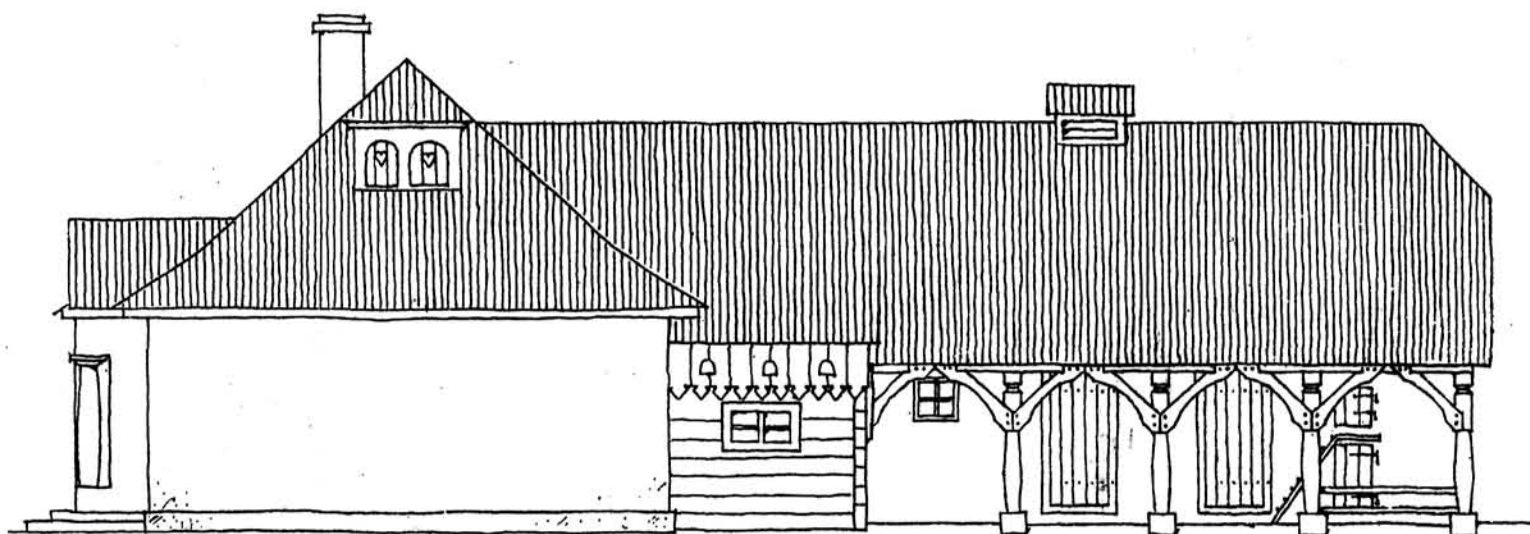
PLAN CHATY
POWIERZCHNIA ZABUDOWANA 157 M²
PRZYBLIŻONY KOSZT 5500 K.



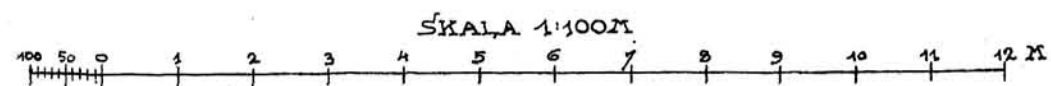
STRONA POŁUDNIOWA



PRZĘKRÓJ A-B

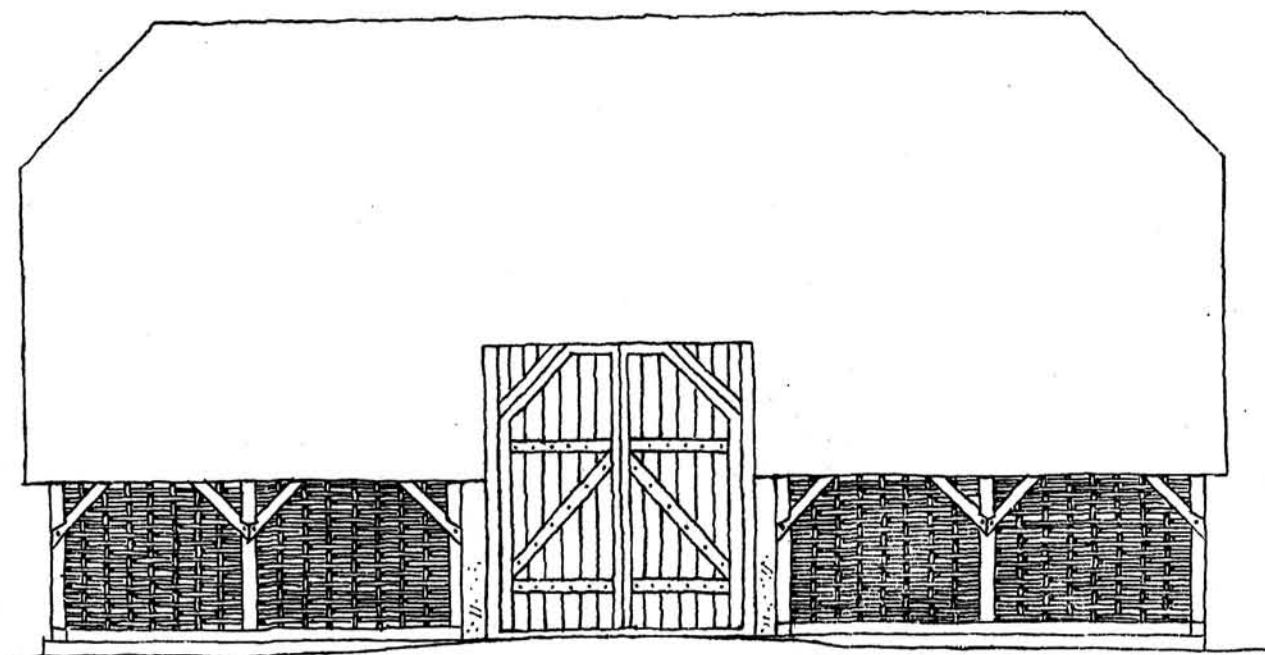


STRONA WŚCHODNIA

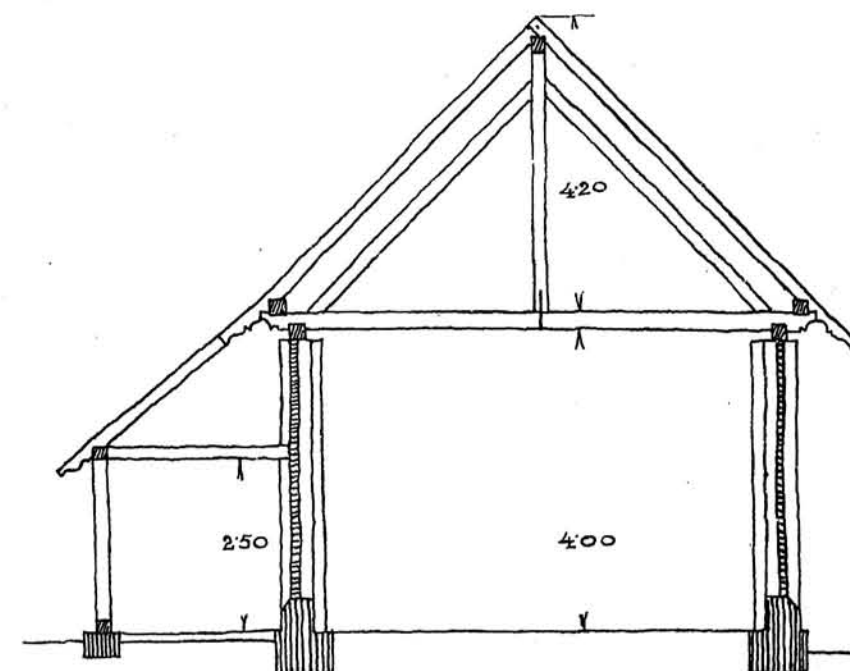


J. Wycupiel

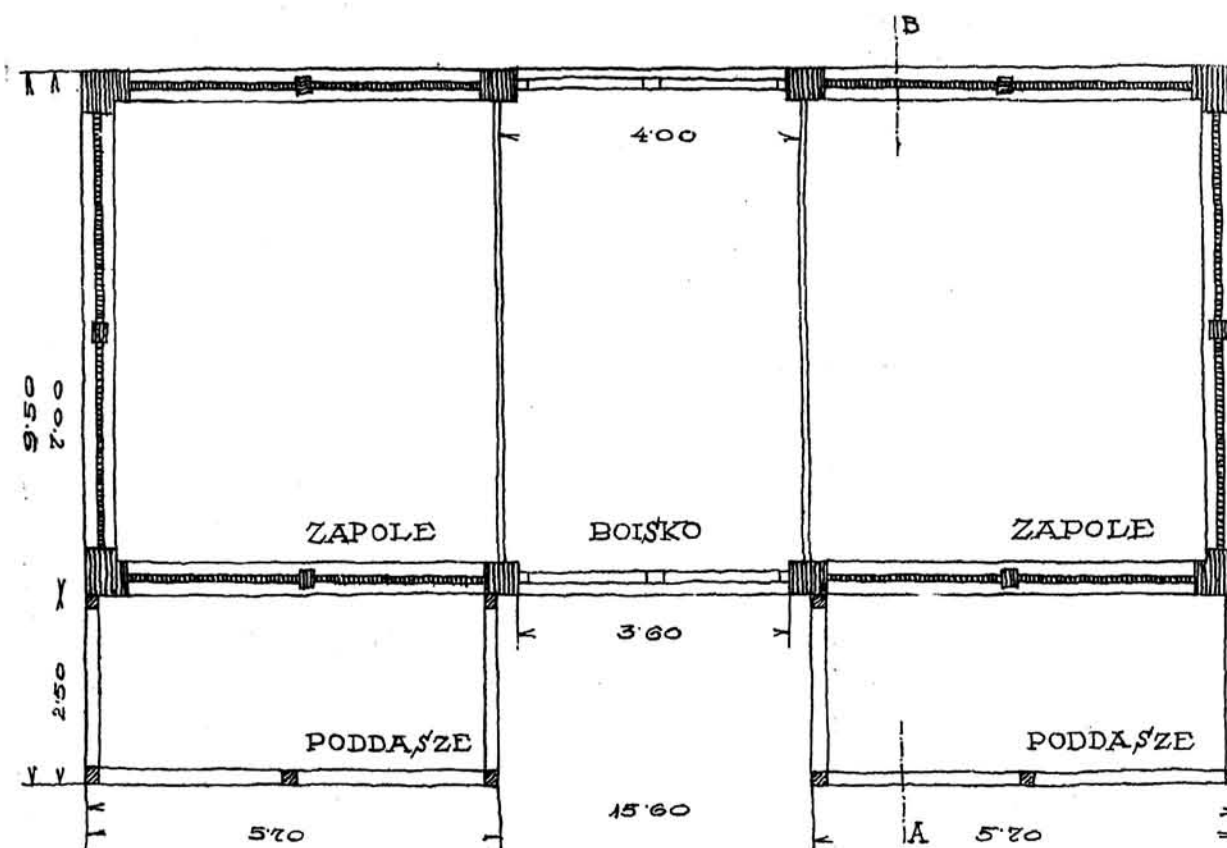
CHATA DLA WŁOŚCIANINA NA 1-2 MORGACH.



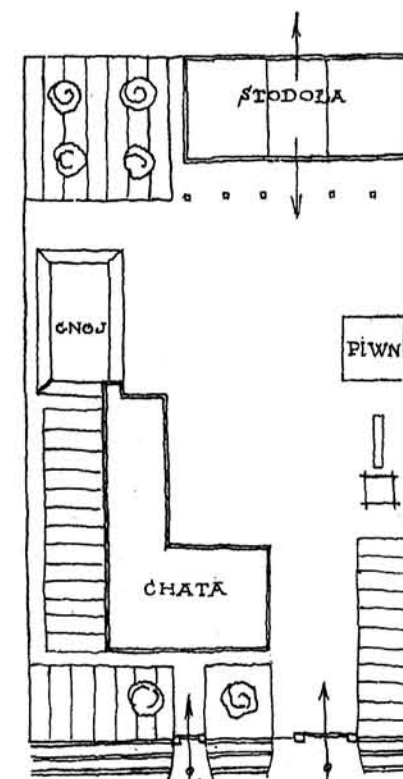
STRONA POŁUDNIOWA.



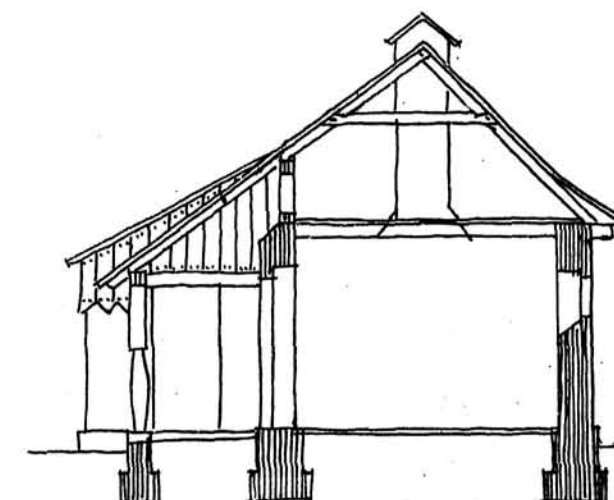
PRZĘKRÓJ A-B



PLAN STODOŁY
POW. ZAB. 109~147 M²
PRZYBLIŻONY KOSZT 1500 K.



SYTUACJA
SKALA 1:500.



PRZĘKRÓJ I-O TAB. 5.

J. Węclowski