

II 1402. UTA

Lev. 1

ZBIOR

cebrniczych Gmachow i Miast Kolcznyc
W Warszawie,

częscia z natury zdietych, a częscia podług istniejących planow rysowane
litogratowane

PRZEZ

Leonarda Schmidnera

Architekt - Baudirektor w Monachium

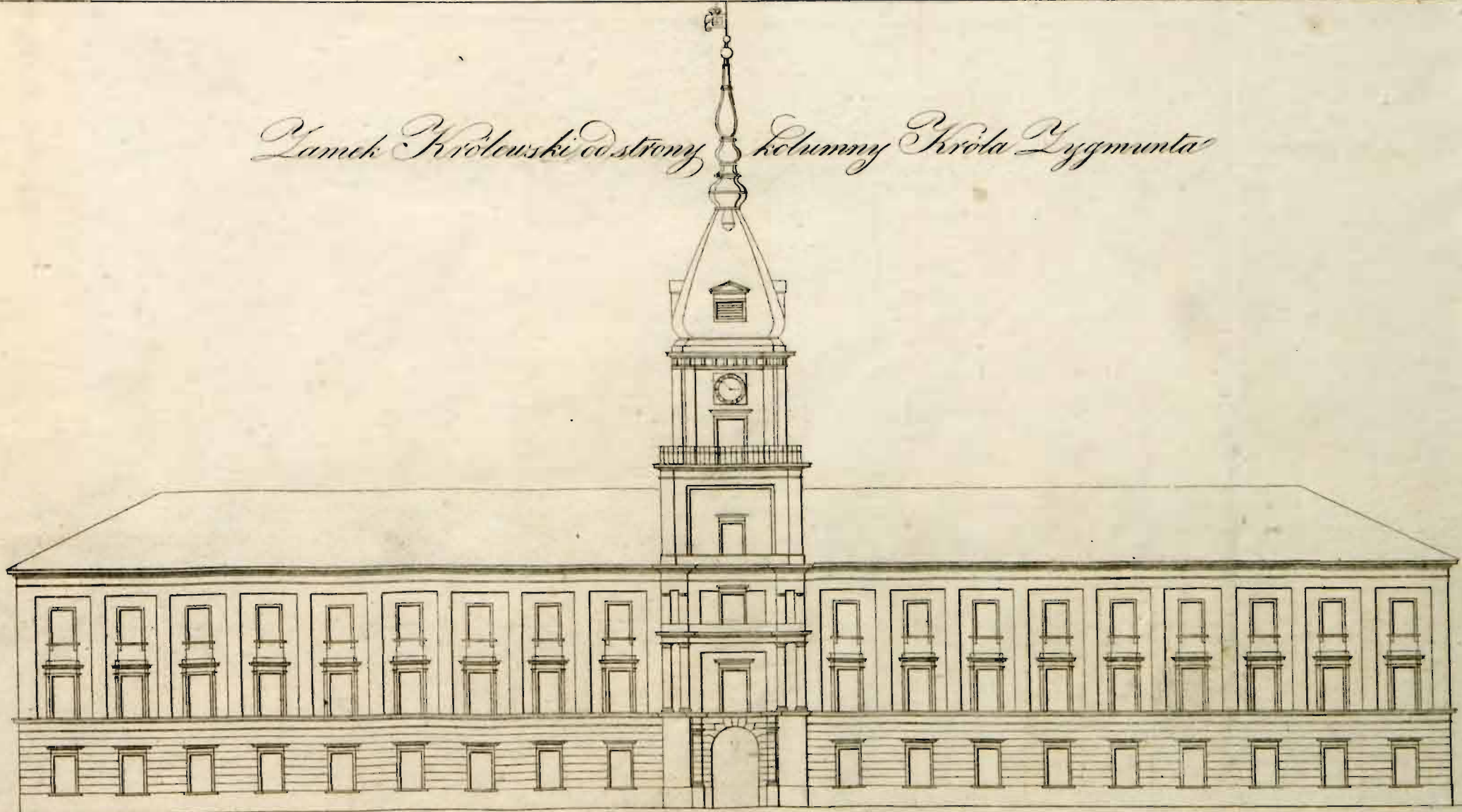
w WARSZAWIE.
1893.

II. 11/21/211

Lesny 1

A

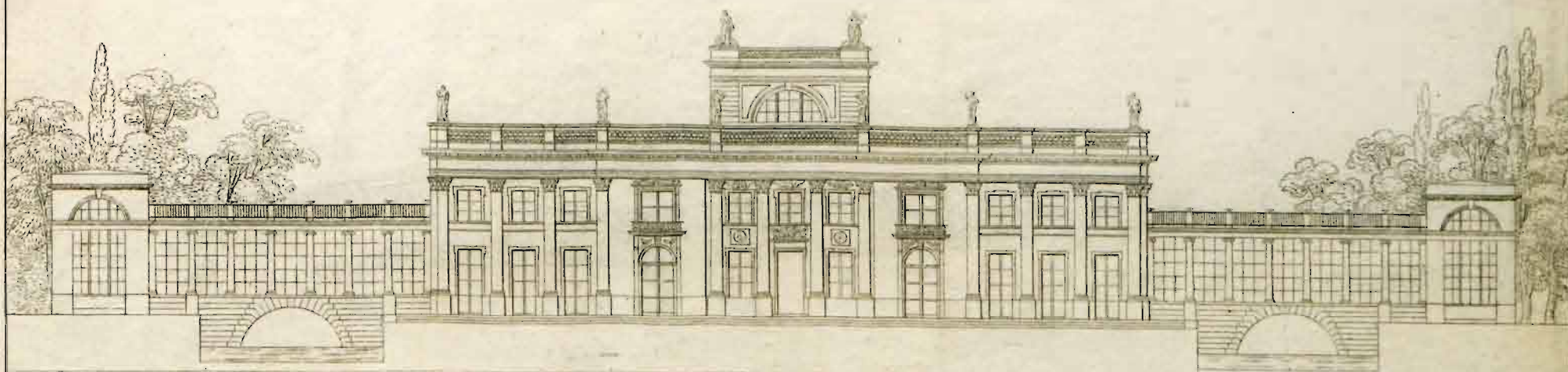
Pałac Królewski od strony Kolumny Króla Zygmunta



Lok Wars

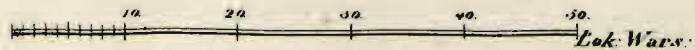
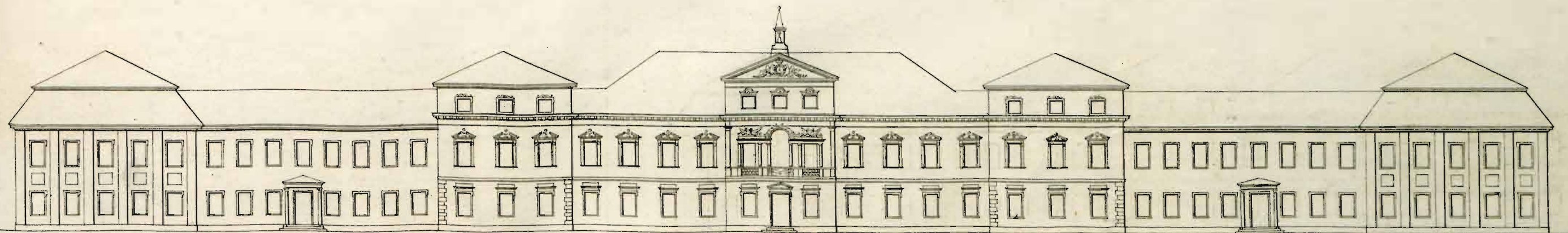
A scale bar with markings at 5, 10, 20, 30, 40, and 50.

Lazienki Królewskie od Strony Ogrodu.

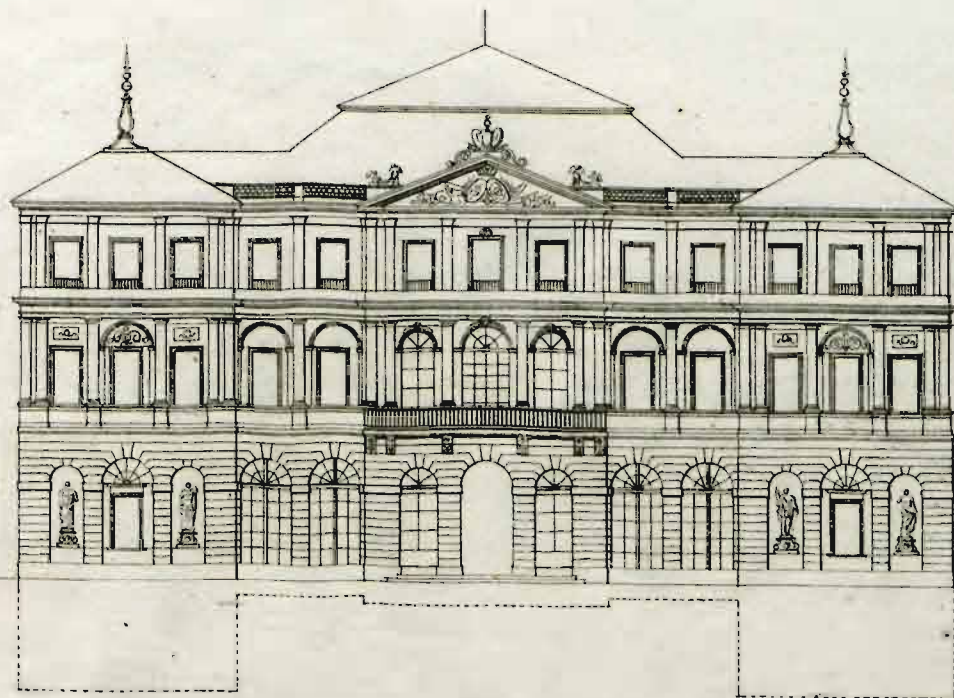


2,84 m
11 20 30 40 50 Lib. Warsz 576

Pałac Saski

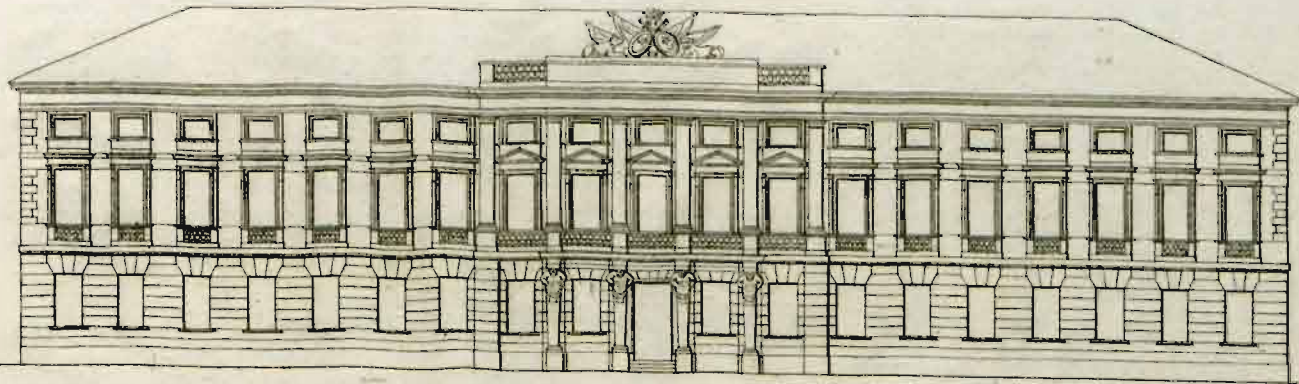


Palac Brylewski



10 20 30 40 50 Lok. Wars

Palac Tyiskiwiczon.

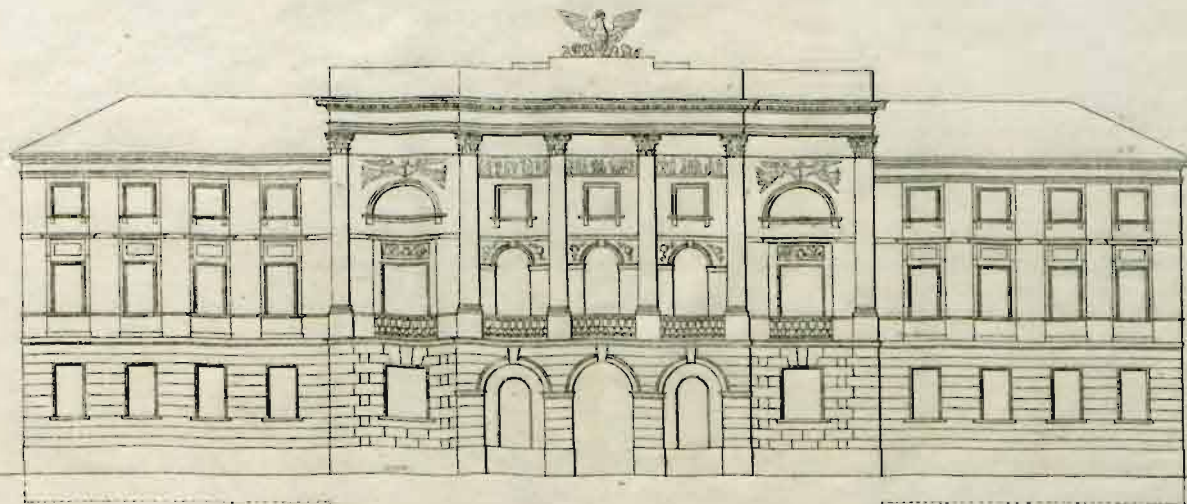


Pałac Krasińskich na krakowskim przedmieściu.



[7]

Pałac Ministerium Spraw wewnętrznych i Policji.

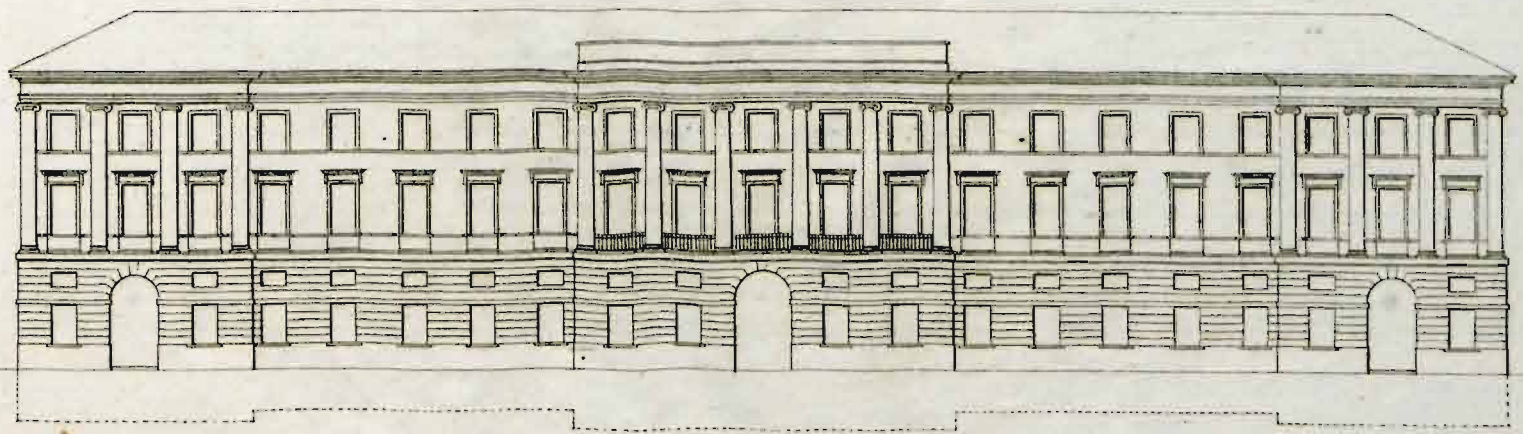


10 20 30 40 50 Lok. Warsz.

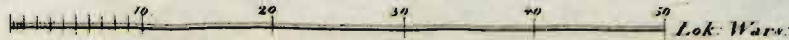
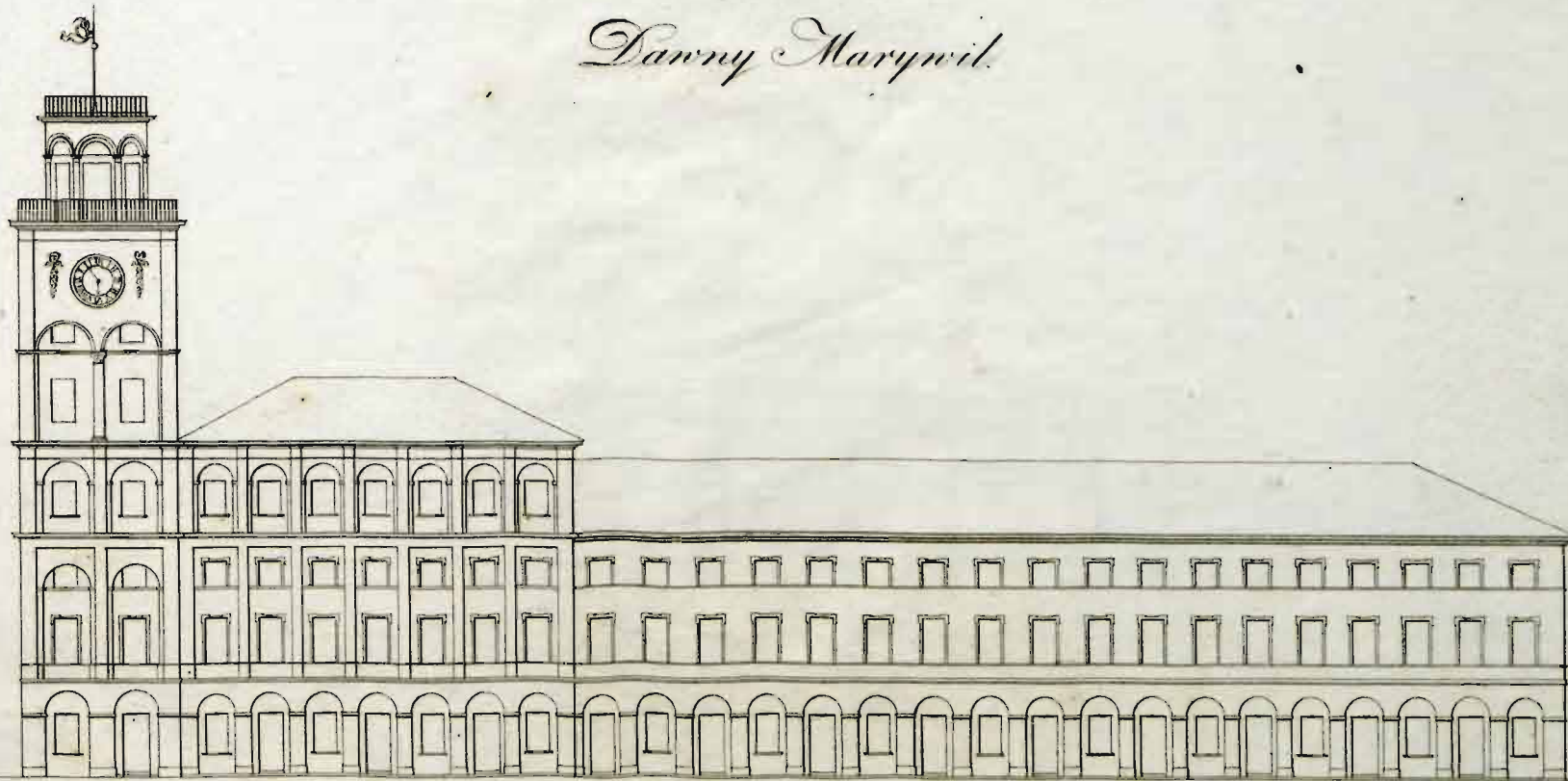
Vom Dynkeoyt generalnuy Trig i mosten



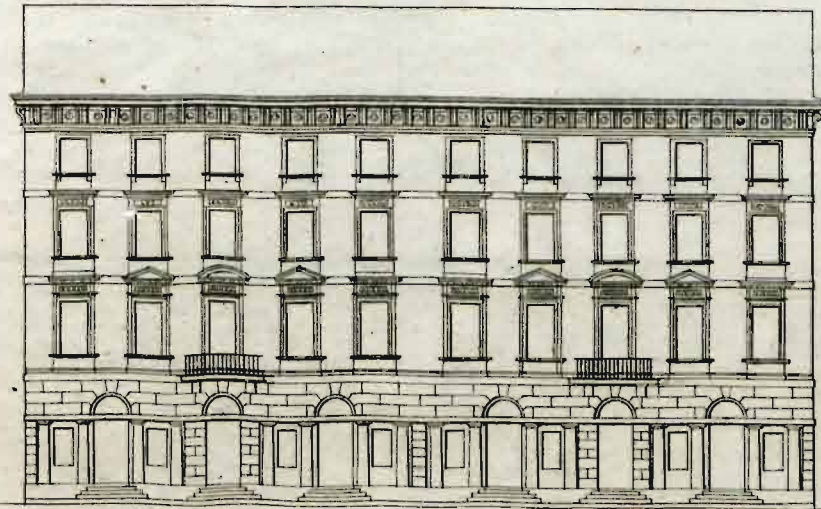
Dom Szarowskiego.



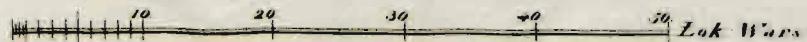
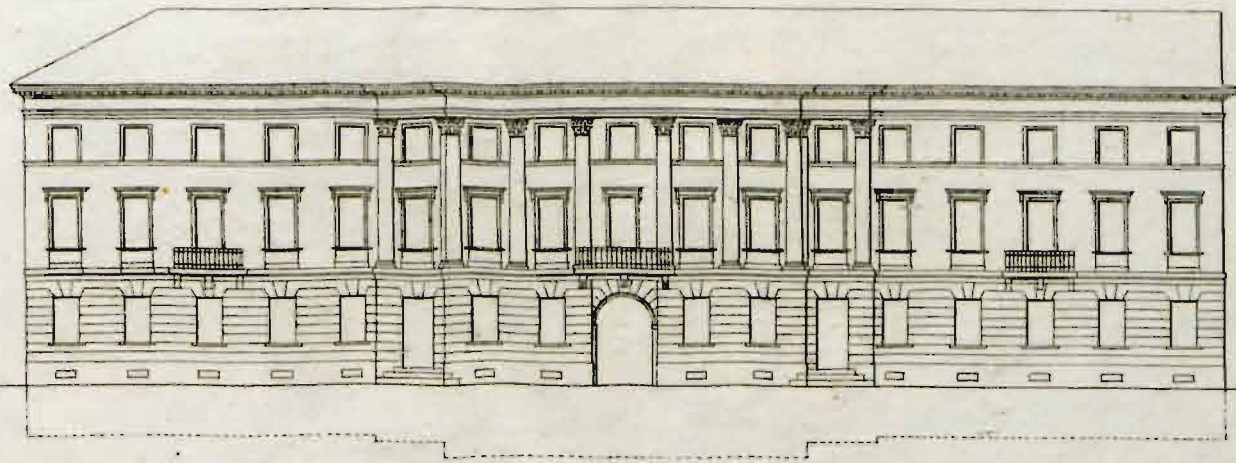
Lanny Marywil.



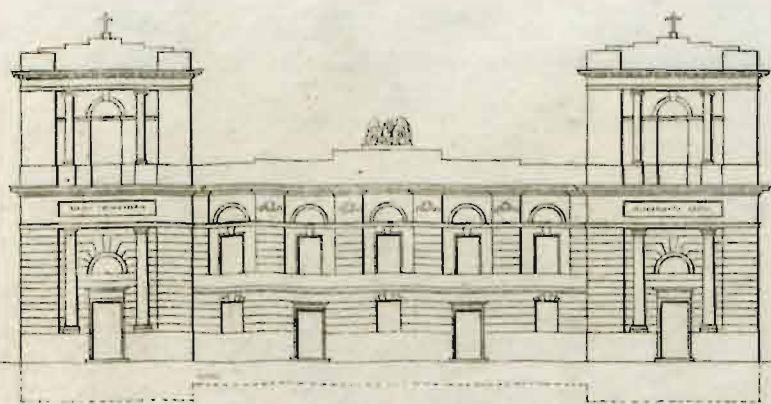
Dom Restoral



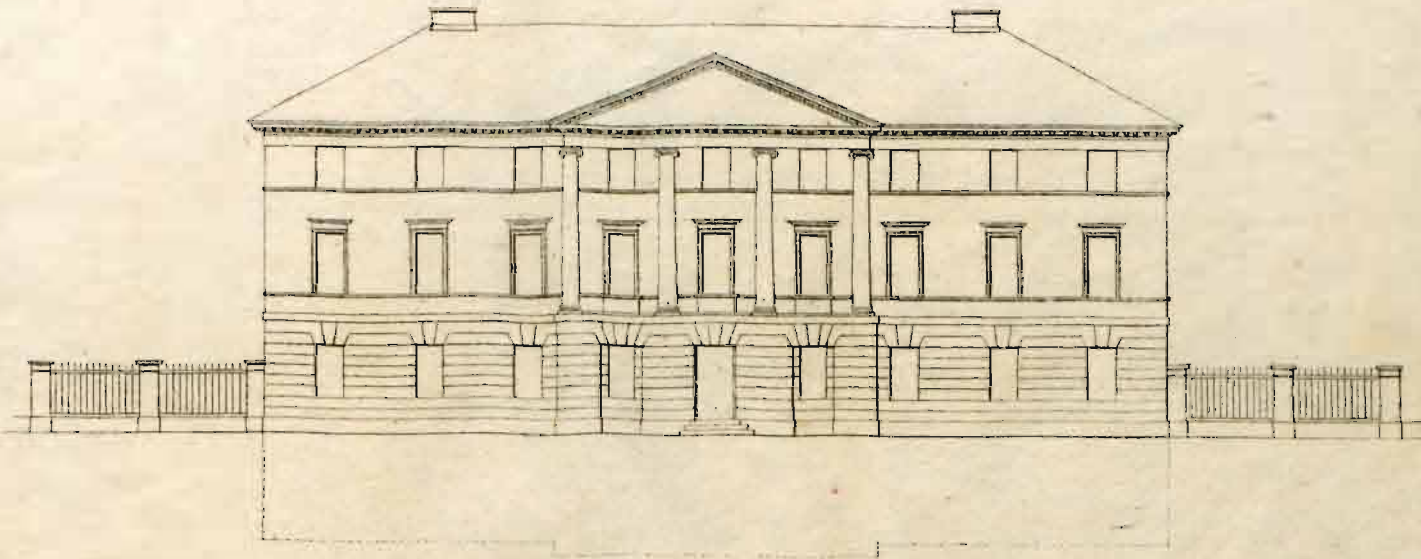
Dom Mikulskięc.



Dom Dobroszynski

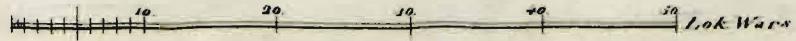


*Facyata
Uniwersytetu Królewskiego*

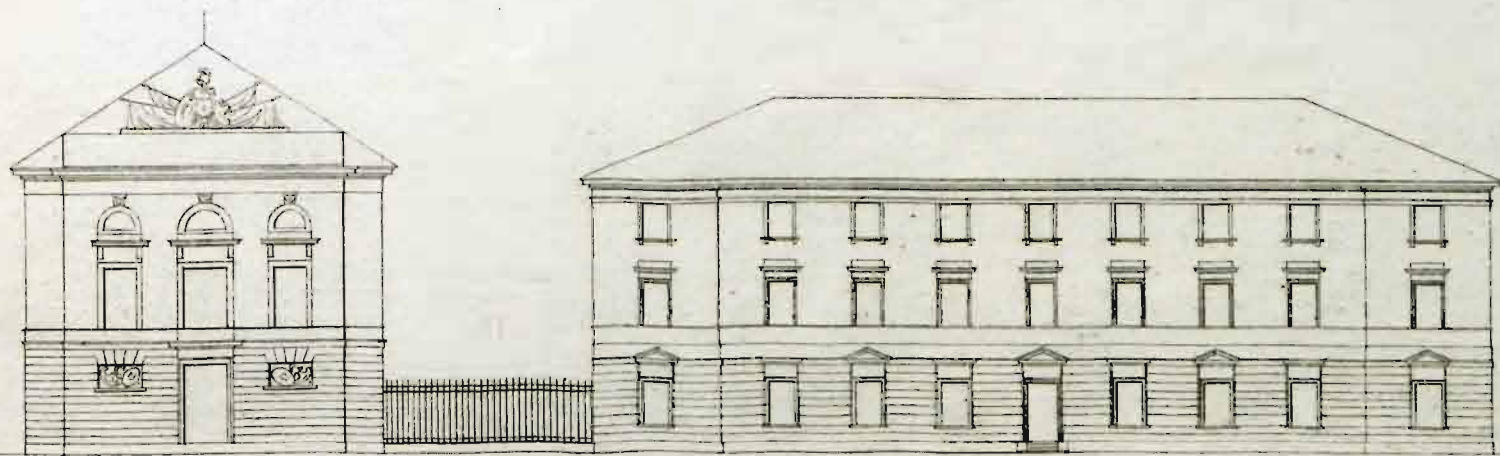


5 10 20 30 40 50 *Lot. W. 2.*

Arsenal.

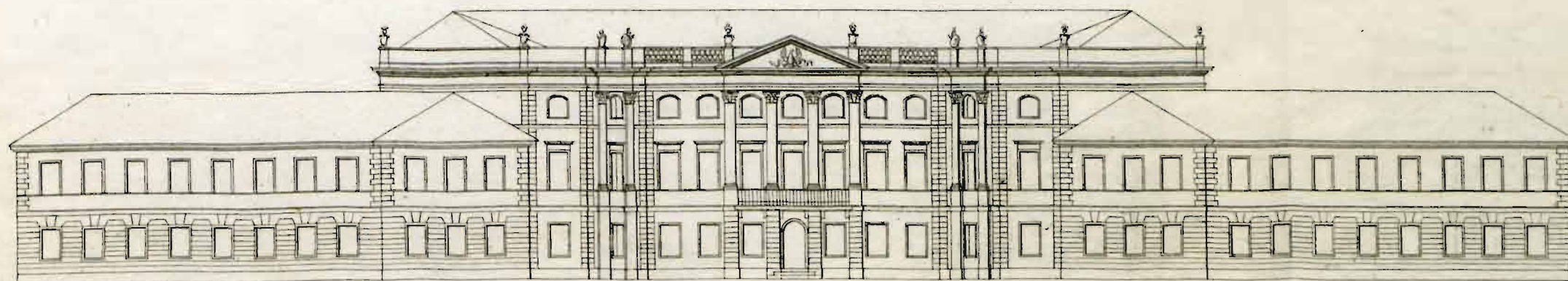


Warsztaty Artyleryjne i Koszary Przemysłnicze

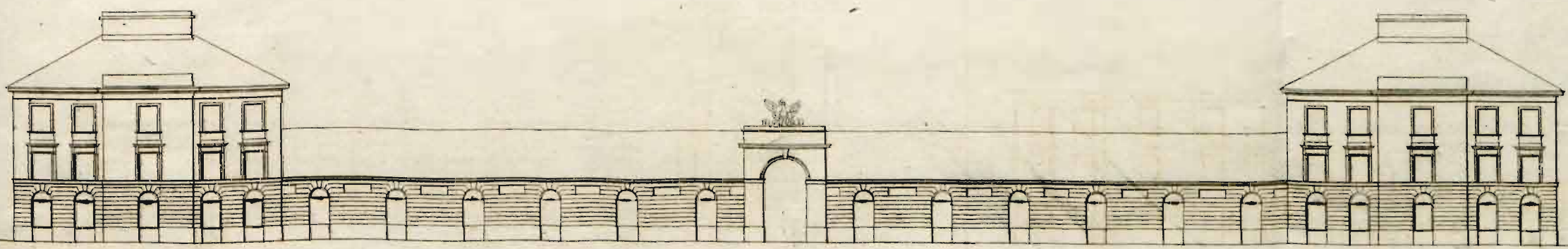


[17]

Kozary Sapiizyiskie.



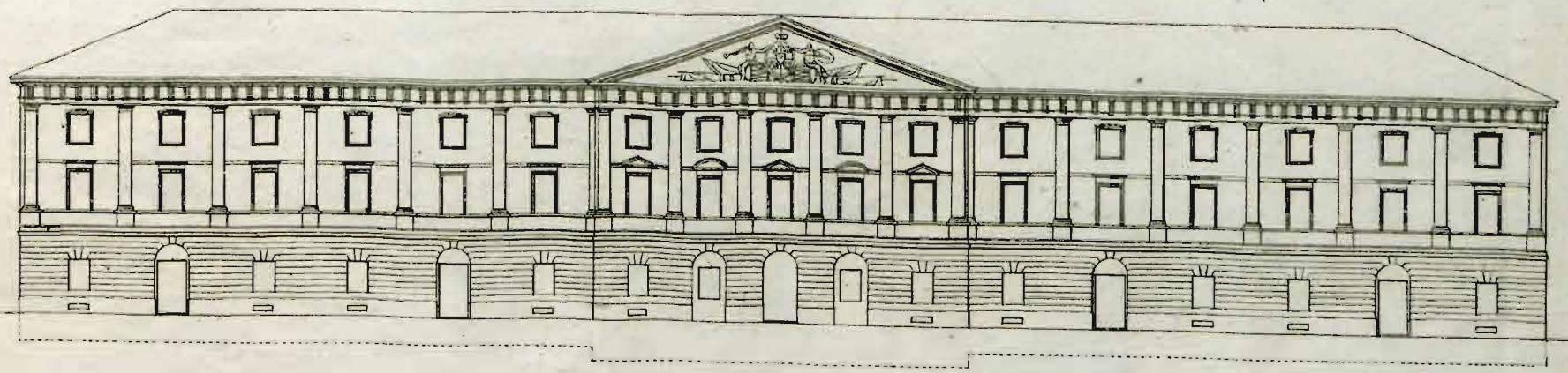
Kasary Gwardyi Artyleryi Konney



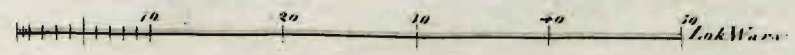
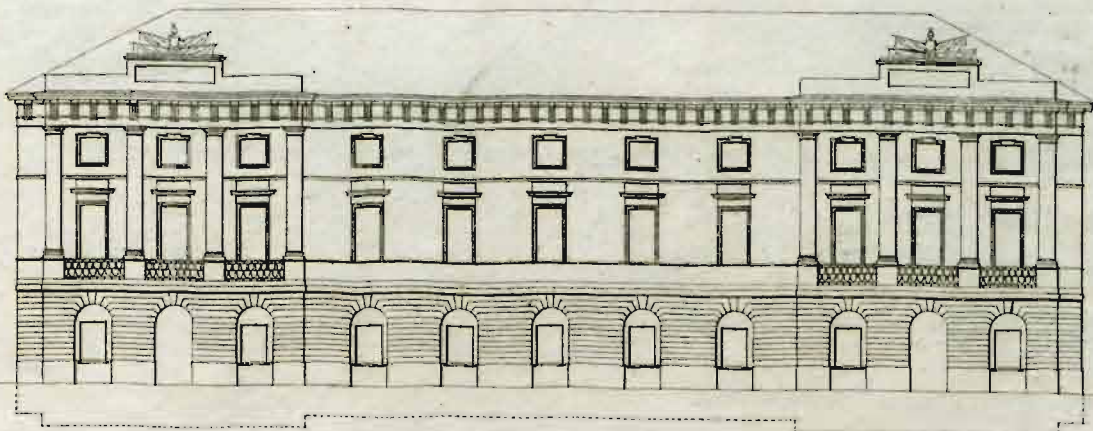
Lok: Wars: 5 10 20 30 40 50



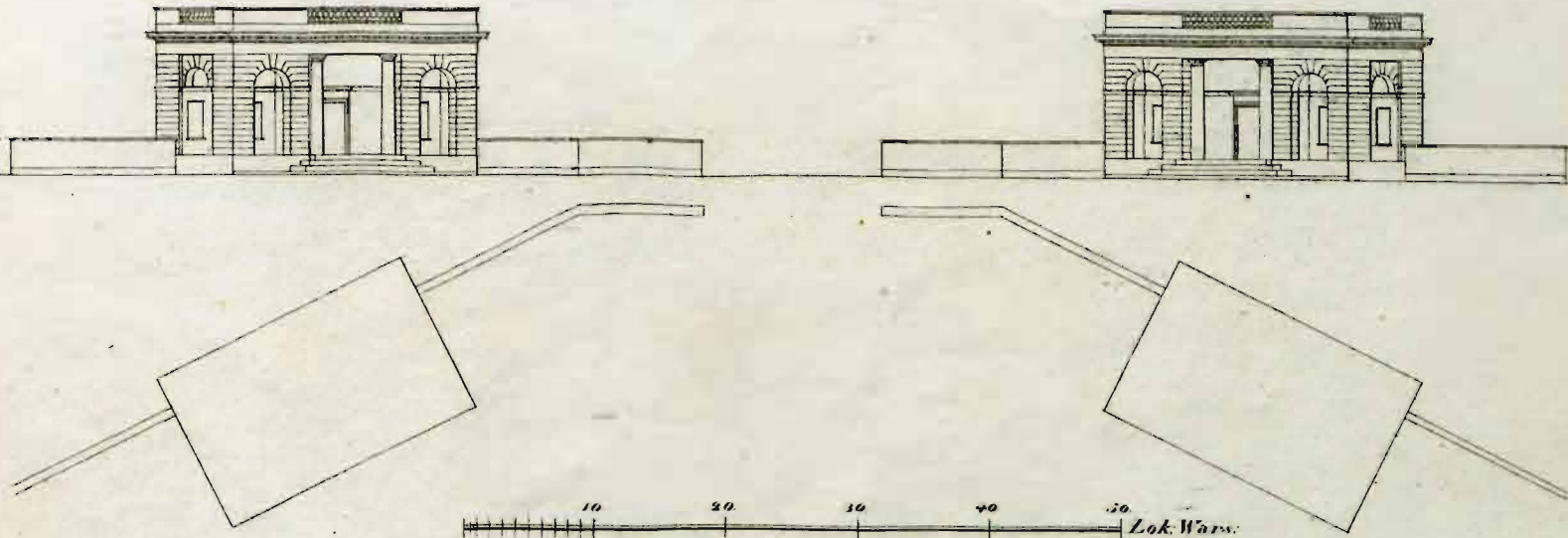
Pawillon Kozar Swadyi Kieronnyj



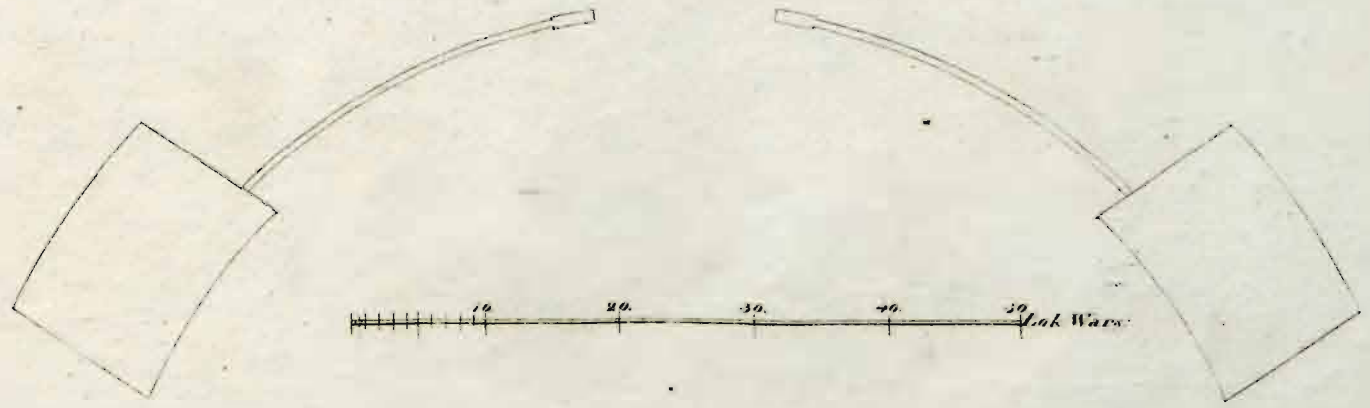
Павилон Косар Гварды Германей.



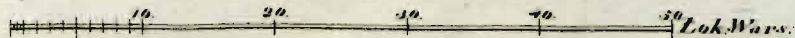
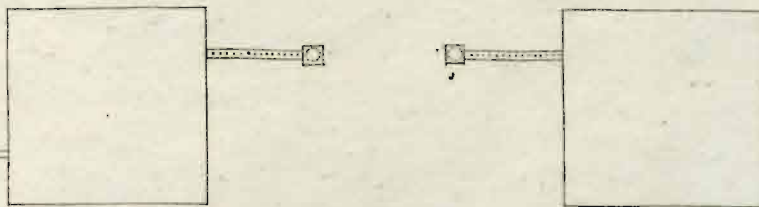
Regatki Marymontskiej.



Regatta Mikolowski



Regatki Wolskiej



Rogaliki Jeruzolimskie

